

**Product Name: Integrin alpha 2 Rabbit Monoclonal Antibody**  
**Catalog #: AMRe02163**

---

## Summary

<b>Production Name</b>	Integrin alpha 2 Rabbit Monoclonal Antibody
<b>Description</b>	Recombinant Rabbit Monoclonal antibody
<b>Host</b>	Rabbit
<b>Application</b>	WB
<b>Reactivity</b>	Human

## Performance

<b>Conjugation</b>	Unconjugated
<b>Modification</b>	Unmodified
<b>Isotype</b>	IgG
<b>Clonality</b>	Monoclonal Antibody
<b>Form</b>	Liquid
<b>Storage</b>	Store at 4°C short term. Aliquot and store at -20°C long term. Avoid freeze/thaw cycles.
<b>Buffer</b>	50mM Tris-Glycine(pH 7.4), 0.15M NaCl, 40% Glycerol, 0.01% Sodium azide and 0.05% BSA
<b>Purification</b>	Affinity Purified

## Immunogen

<b>Gene Name</b>	ITGA2
<b>Alternative Names</b>	ITGA2; CD49B; Integrin alpha-2; CD49 antigen-like family member B; Collagen receptor; Platelet membrane glycoprotein Ia; GPIa; VLA-2 subunit alpha; CD49b
<b>Gene ID</b>	3673
<b>SwissProt ID</b>	P17301

## Application

<b>Dilution Ratio</b>	WB: 1/500-1/1000
<b>Molecular Weight</b>	Calculated MW: 129 kDa; Observed MW: 150 kDa

**Product Name: Integrin alpha 2 Rabbit Monoclonal Antibody**  
**Catalog #: AMRe02163**

---

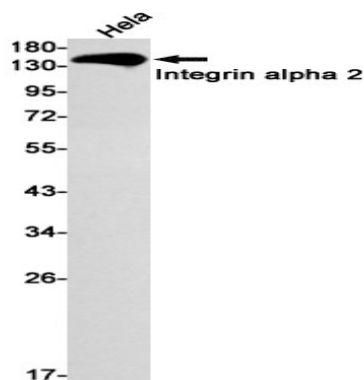
## Background

Integrin alpha-2/beta-1 is a receptor for laminin, collagen, collagen C-propeptides, fibronectin and E-cadherin. It recognizes the proline-hydroxylated sequence G-F-P-G-E-R in collagen. It is responsible for adhesion of platelets and other cells to collagens, modulation of collagen and collagenase gene expression, force generation and organization of newly synthesized extracellular matrix.

## Research Area

Signal Transduction

## Image Data



Western blot analysis of Integrin alpha 2 in HeLa lysates using Integrin alpha 2 antibody.

## Note

For research use only.