

Product Name: Inhibin beta A Rabbit Monoclonal Antibody
Catalog #: AMRe02157

Summary

Production Name	Inhibin beta A Rabbit Monoclonal Antibody
Description	Recombinant Rabbit Monoclonal antibody
Host	Rabbit
Application	WB
Reactivity	Human,Rat,Hamster

Performance

Conjugation	Unconjugated
Modification	Unmodified
Isotype	IgG
Clonality	Monoclonal Antibody
Form	Liquid
Storage	Store at 4°C short term. Aliquot and store at -20°C long term. Avoid freeze/thaw cycles.
Buffer	50mM Tris-Glycine(pH 7.4), 0.15M NaCl, 40% Glycerol, 0.01% Sodium azide and 0.05% BSA
Purification	Affinity Purified

Immunogen

Gene Name	INHBA
Alternative Names	INHBA; Inhibin beta A chain; Activin beta-A chain; Erythroid differentiation protein; EDF
Gene ID	3624
SwissProt ID	P08476

Application

Dilution Ratio	WB: 1/500-1/1000
Molecular Weight	Calculated MW: 47 kDa; Observed MW: 44 kDa

Product Name: Inhibin beta A Rabbit Monoclonal Antibody
Catalog #: AMRe02157

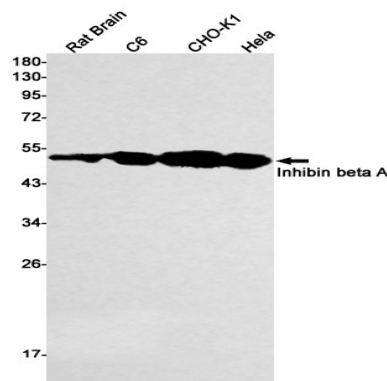
Background

Inhibins and activins inhibit and activate, respectively, the secretion of follitropin by the pituitary gland. Inhibins/activins are involved in regulating a number of diverse functions such as hypothalamic and pituitary hormone secretion, gonadal hormone secretion, germ cell development and maturation, erythroid differentiation, insulin secretion, nerve cell survival, embryonic axial development or bone growth, depending on their subunit composition.

Research Area

Signal Transduction

Image Data



Western blot analysis of Inhibin beta A in rat Brain, C6, CHO-K1, HeLa lysates using Inhibin beta A antibody.

Note

For research use only.