

**Product Name: IL-1 Receptor Antagonist Protein Rabbit
Monoclonal Antibody
Catalog #: AMRe02152**

Summary

Production Name	IL-1 Receptor Antagonist Protein Rabbit Monoclonal Antibody
Description	Recombinant Rabbit Monoclonal antibody
Host	Rabbit
Application	WB,IHC-F,IHC-P,ICC/IF,IP
Reactivity	Human,Mouse

Performance

Conjugation	Unconjugated
Modification	Unmodified
Isotype	IgG
Clonality	Monoclonal Antibody
Form	Liquid
Storage	Store at 4°C short term. Aliquot and store at -20°C long term. Avoid freeze/thaw cycles.
Buffer	50mM Tris-Glycine(pH 7.4), 0.15M NaCl, 40% Glycerol, 0.01% Sodium azide and 0.05% BSA
Purification	Affinity Purified

Immunogen

Gene Name	IL1RN
Alternative Names	IL-1 Receptor Antagonist Protein; DIRA; IRAP; IL1F3; IL1RA; MVCD4; IL-1RN; IL-1ra; IL-1ra3; ICIL-1RA
Gene ID	3557
SwissProt ID	P18510

Application

Dilution Ratio	WB: 1/500-1/1000 IHC: 1/50-1/100 IF: 1/50-1/200 IP: 1/20
Molecular Weight	Calculated MW: 20 kDa; Observed MW: 20 kDa

**Product Name: IL-1 Receptor Antagonist Protein Rabbit
Monoclonal Antibody
Catalog #: AMRe02152**

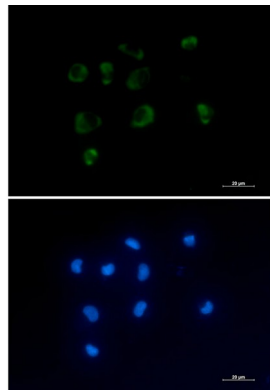
Background

Interleukin-1 (IL-1) is a key pro-inflammatory cytokine that has diverse actions in the brain as a regulator of host defense responses and a mediator of inflammation. Inhibits the activity of interleukin-1 by binding to receptor IL1R1 and preventing its association with the coreceptor IL1RAP for signaling. Has no interleukin-1 like activity.

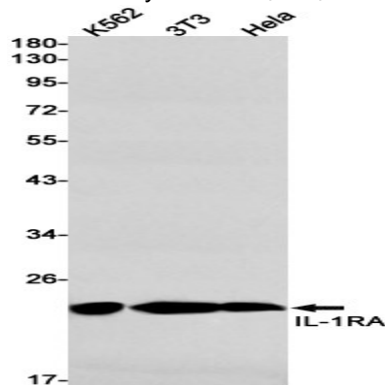
Research Area

Immunology

Image Data

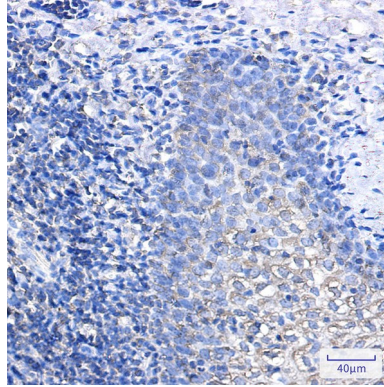


Immunocytochemistry analysis of IL 1 Receptor Antagonist Protein (green) in HEPG2 using IL 1 Receptor Antagonist Protein antibody, and DAPI (blue).



Western blot analysis of IL-1RA in K562, 3T3, HeLa lysates using IL-1RA antibody.

**Product Name: IL-1 Receptor Antagonist Protein Rabbit
Monoclonal Antibody
Catalog #: AMRe02152**



Immunohistochemistry analysis of paraffin-embedded Human tonsil using IL-1RA antibody. High-pressure and temperature Sodium Citrate pH 6.0 was used for antigen retrieval.

Note

For research use only.