

Summary

Production Name	IGFBP1 Rabbit Monoclonal Antibody
Description	Recombinant Rabbit Monoclonal antibody
Host	Rabbit
Application	WB
Reactivity	Human

Performance

Conjugation	Unconjugated
Modification	Unmodified
Isotype	IgG
Clonality	Monoclonal Antibody
Form	Liquid
Storage	Store at 4°C short term. Aliquot and store at -20°C long term. Avoid freeze/thaw cycles.
Buffer	50mM Tris-Glycine(pH 7.4), 0.15M NaCl, 40% Glycerol, 0.01% Sodium azide and 0.05% BSA
Purification	Affinity Purified

Immunogen

Gene Name	IGFBP1
Alternative Names	IGFBP1; IBP1; Insulin-like growth factor-binding protein 1; IBP-1; IGF-binding protein 1; IGFBP-1; Placental protein 12; PP12
Gene ID	3484
SwissProt ID	P08833

Application

Dilution Ratio	WB: 1/500-1/1000
Molecular Weight	Calculated MW: 28 kDa; Observed MW: 28 kDa

Product Name: IGFBP1 Rabbit Monoclonal Antibody
Catalog #: AMRe02139



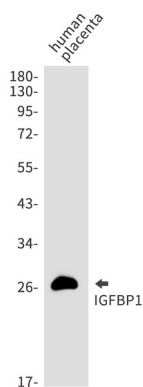
Background

IGF-binding proteins prolong the half-life of the IGFs and have been shown to either inhibit or stimulate the growth promoting effects of the IGFs on cell culture. They alter the interaction of IGFs with their cell surface receptors. Promotes cell migration.

Research Area

Signal Transduction

Image Data



Western blot analysis of IGFBP1 in Human placenta lysates using IGFBP1 antibody.

Note

For research use only.