

---

## Summary

<b>Production Name</b>	IFITM1 Rabbit Monoclonal Antibody
<b>Description</b>	Recombinant Rabbit Monoclonal antibody
<b>Host</b>	Rabbit
<b>Application</b>	WB,IHC-F,IHC-P,ICC/IF,IP
<b>Reactivity</b>	Human

## Performance

<b>Conjugation</b>	Unconjugated
<b>Modification</b>	Unmodified
<b>Isotype</b>	IgG
<b>Clonality</b>	Monoclonal Antibody
<b>Form</b>	Liquid
<b>Storage</b>	Store at 4°C short term. Aliquot and store at -20°C long term. Avoid freeze/thaw cycles.
<b>Buffer</b>	50mM Tris-Glycine(pH 7.4), 0.15M NaCl, 40% Glycerol, 0.01% Sodium azide and 0.05% BSA
<b>Purification</b>	Affinity Purified

## Immunogen

<b>Gene Name</b>	IFITM1
<b>Alternative Names</b>	9-27; CD225; IFI17; LEU13; DSPA2a
<b>Gene ID</b>	8519
<b>SwissProt ID</b>	P13164

## Application

<b>Dilution Ratio</b>	WB: 1/500-1/1000 IHC: 1/50-1/100 IF: 1/50-1/200 IP: 1/20
<b>Molecular Weight</b>	Calculated MW: 14 kDa; Observed MW: 14 kDa

## Background

---

**Product Name: IFITM1 Rabbit Monoclonal Antibody**  
**Catalog #: AMRe02135**

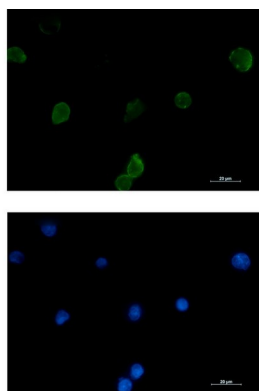


IFN-induced antiviral protein which inhibits the entry of viruses to the host cell cytoplasm, permitting endocytosis, but preventing subsequent viral fusion and release of viral contents into the cytosol. Active against multiple viruses, including influenza A virus, SARS coronavirus (SARS-CoV), Marburg virus (MARV), Ebola virus (EBOV), Dengue virus (DENV), West Nile virus (WNV), human immunodeficiency virus type 1 (HIV-1) and hepatitis C virus (HCV). Can inhibit: influenza virus hemagglutinin protein-mediated viral entry, MARV and EBOV GP1,2-mediated viral entry and SARS-CoV S protein-mediated viral entry. Also implicated in cell adhesion and control of cell growth and migration. Plays a key role in the antiproliferative action of IFN-gamma either by inhibiting the ERK activation or by arresting cell growth in G1 phase in a p53-dependent manner. Acts as a positive regulator of osteoblast differentiation.

## Research Area

Immunology

## Image Data

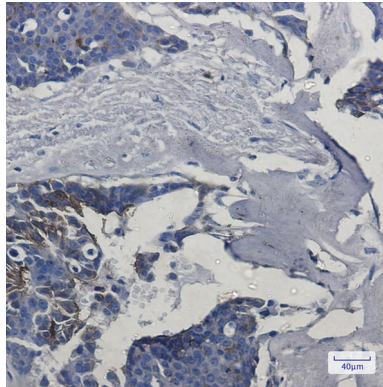


Immunocytochemistry analysis of IFITM1 (green) in K562 using IFITM1 antibody, and DAPI (blue).



Western blot analysis of IFITM1 in K562 lysates using IFITM1 antibody.

**Product Name: IFITM1 Rabbit Monoclonal Antibody**  
**Catalog #: AMRe02135**



Immunohistochemistry analysis of paraffin-embedded Human breast cancer tissue using IFITM1 antibody. High-pressure and temperature Sodium Citrate pH 6.0 was used for antigen retrieval.

**Note**

For research use only.