

Summary

Production Name	Hsp60 Rabbit Monoclonal Antibody
Description	Recombinant Rabbit Monoclonal antibody
Host	Rabbit
Application	WB,IHC-P
Reactivity	Human,Mouse,Rat

Performance

Conjugation	Unconjugated
Modification	Unmodified
Isotype	IgG
Clonality	Monoclonal Antibody
Form	Liquid
Storage	Store at 4°C short term. Aliquot and store at -20°C long term. Avoid freeze/thaw cycles.
Buffer	50mM Tris-Glycine(pH 7.4), 0.15M NaCl, 40% Glycerol, 0.01% Sodium azide and 0.05% BSA
Purification	Affinity Purified

Immunogen

Gene Name	HSPD1 HSPD1; HSP60; 60 kDa heat shock protein; mitochondrial; 60 kDa chaperonin;
Alternative Names	Chaperonin 60; CPN60; Heat shock protein 60; HSP-60; Hsp60; HuCHA60; Mitochondrial matrix protein P1; P60 lymphocyte protein
Gene ID	3329
SwissProt ID	P10809

Application

Dilution Ratio	WB: 1/500-1/1000 IHC: 1/50-1/100
Molecular Weight	Calculated MW: 61 kDa; Observed MW: 61 kDa

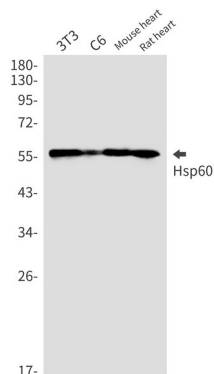
Background

HSP60 Implicated in mitochondrial protein import and macromolecular assembly. May facilitate the correct folding of imported proteins. May also prevent misfolding and promote the refolding and proper assembly of unfolded polypeptides generated under stress conditions in the mitochondrial matrix. Belongs to the chaperonin (HSP60) family. Interacts with HBV protein X and HTLV-1 protein p40tax.

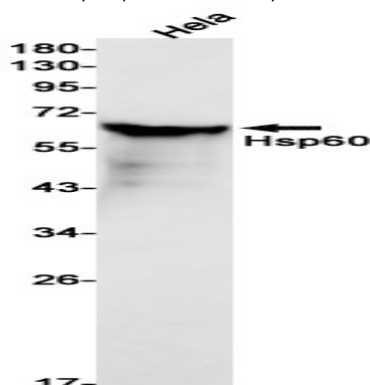
Research Area

Tags & Cell Markers

Image Data

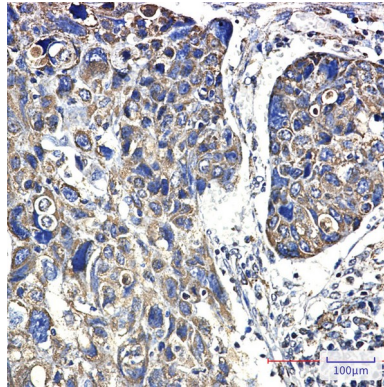


Western blot analysis of Hsp60 in 3T3, C6, mouse heart, rat heart lysates using Hsp60 antibody.



Western blot analysis of Hsp60 in HeLa lysates using Hsp60 antibody.

Product Name: Hsp60 Rabbit Monoclonal Antibody
Catalog #: AMRe02123



Immunohistochemistry analysis of paraffin-embedded Human lung cancer using Hsp60 antibody. High-pressure and temperature Sodium Citrate pH 6.0 was used for antigen retrieval.

Note

For research use only.