

Product Name: HP1 gamma Rabbit Monoclonal Antibody
Catalog #: AMRe02114

Summary

Production Name	HP1 gamma Rabbit Monoclonal Antibody
Description	Recombinant Rabbit Monoclonal antibody
Host	Rabbit
Application	WB,IHC-P,IP
Reactivity	Human,Mouse,Rat

Performance

Conjugation	Unconjugated
Modification	Unmodified
Isotype	IgG
Clonality	Monoclonal Antibody
Form	Liquid
Storage	Store at 4°C short term. Aliquot and store at -20°C long term. Avoid freeze/thaw cycles.
Buffer	50mM Tris-Glycine(pH 7.4), 0.15M NaCl, 40% Glycerol, 0.01% Sodium azide and 0.05% BSA
Purification	Affinity Purified

Immunogen

Gene Name	Cbx3
Alternative Names	HECH; HP1-GAMMA; HP1Hs-gamma; CBX3
Gene ID	12417.0
SwissProt ID	P23198

Application

Dilution Ratio	WB: 1/500-1/1000 IHC: 1/50-1/100 IP: 1/20
Molecular Weight	Calculated MW: 21 kDa; Observed MW: 21 kDa

Product Name: HP1 gamma Rabbit Monoclonal Antibody
Catalog #: AMRe02114

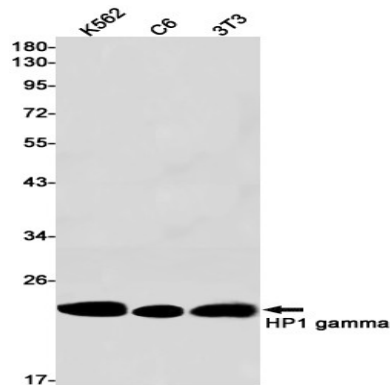
Background

Component of heterochromatin. Recognizes and binds histone H3 tails methylated at 'Lys-9', leading to epigenetic repression. Probably involved in the repression of many genes located in euchromatin, such as E2F1, MYC and CDC25A. Involved in the formation of functional kinetochore through interaction with MIS12 complex proteins. Contributes to the conversion of local chromatin to a heterochromatin-like repressive state through H3 'Lys-9' trimethylation, mediates the recruitment of the methyltransferases SUV39H1 and/or SUV39H2 by the PER complex to the E-box elements of the circadian target genes such as PER2 itself or PER1.

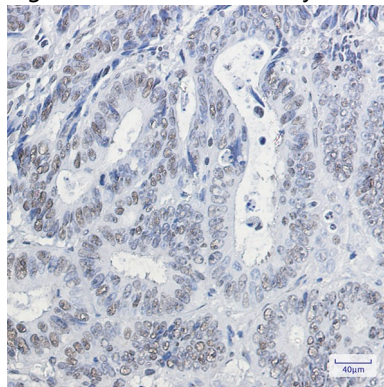
Research Area

Epigenetics and Nuclear Signaling

Image Data



Western blot analysis of HP1 gamma in K562, C6, 3T3 lysates using HP1 gamma antibody.



Immunohistochemistry analysis of paraffin-embedded Human colon cancer using HP1 gamma antibody. High-pressure and temperature Sodium Citrate pH 6.0 was used for antigen retrieval.

Note

For research use only.

**Product Name: HP1 gamma Rabbit Monoclonal
Antibody**
Catalog #: AMRe02114

