

Product Name: HP1 alpha Rabbit Monoclonal Antibody
Catalog #: AMRe02113



Summary

Production Name	HP1 alpha Rabbit Monoclonal Antibody
Description	Recombinant Rabbit Monoclonal antibody
Host	Rabbit
Application	WB,IHC-F,IHC-P,ICC/IF,IP
Reactivity	Human,Mouse,Rat

Performance

Conjugation	Unconjugated
Modification	Unmodified
Isotype	IgG
Clonality	Monoclonal Antibody
Form	Liquid
Storage	Store at 4°C short term. Aliquot and store at -20°C long term. Avoid freeze/thaw cycles.
Buffer	50mM Tris-Glycine(pH 7.4), 0.15M NaCl, 40% Glycerol, 0.01% Sodium azide and 0.05% BSA
Purification	Affinity Purified

Immunogen

Gene Name	CBX5
Alternative Names	CBX5; HP1A; Chromobox protein homolog 5; Antigen p25; Heterochromatin protein 1 homolog alpha; HP1 alpha
Gene ID	23468
SwissProt ID	P45973

Application

Dilution Ratio	WB: 1/500-1/1000 IHC: 1/50-1/100 IF: 1/50-1/200 IP: 1/20
Molecular Weight	Calculated MW: 22 kDa; Observed MW: 22 kDa

Product Name: HP1 alpha Rabbit Monoclonal Antibody
Catalog #: AMRe02113



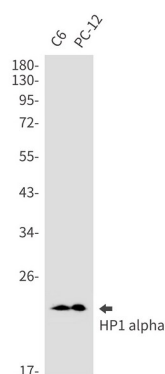
Background

Component of heterochromatin that recognizes and binds histone H3 tails methylated at 'Lys-9' (H3K9me), leading to epigenetic repression. In contrast, it is excluded from chromatin when 'Tyr-41' of histone H3 is phosphorylated (H3Y41ph). Can interact with lamin-B receptor (LBR). This interaction can contribute to the association of the heterochromatin with the inner nuclear membrane. Involved in the formation of functional kinetochore through interaction with MIS12 complex proteins.

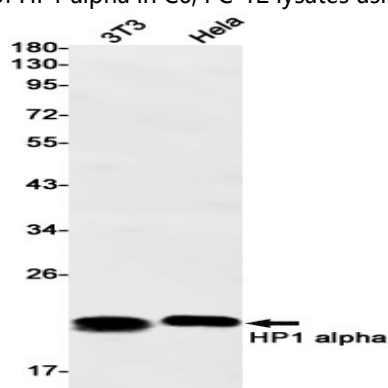
Research Area

Epigenetics and Nuclear Signaling

Image Data

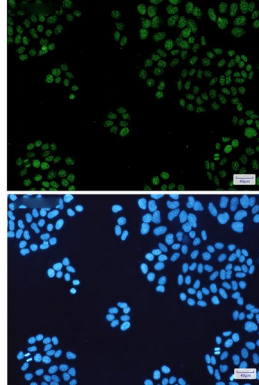


Western blot analysis of HP1 alpha in C6, PC-12 lysates using HP1 alpha antibody.

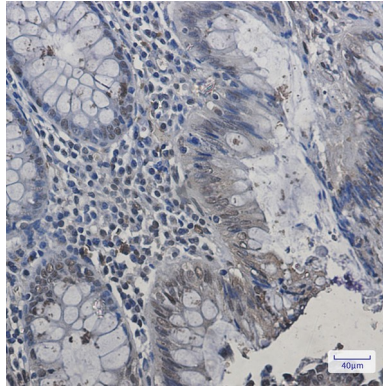


Western blot analysis of HP1 alpha in 3T3, HeLa lysates using HP1 alpha antibody.

Product Name: HP1 alpha Rabbit Monoclonal Antibody
Catalog #: AMRe02113



Immunocytochemistry analysis of HP1 alpha(green) in HeLa using HP1 alpha antibody, and DAPI(blue)



Immunohistochemistry analysis of paraffin-embedded Human colon cancer using HP1 alpha antibody. High-pressure and temperature Sodium Citrate pH 6.0 was used for antigen retrieval.

Note

For research use only.