

Summary

Production Name	HLA A Rabbit Monoclonal Antibody
Description	Recombinant Rabbit Monoclonal antibody
Host	Rabbit
Application	WB,IHC-F,IHC-P,ICC/IF,IP
Reactivity	Human

Performance

Conjugation	Unconjugated
Modification	Unmodified
Isotype	IgG
Clonality	Monoclonal Antibody
Form	Liquid
Storage	Store at 4°C short term. Aliquot and store at -20°C long term. Avoid freeze/thaw cycles.
Buffer	50mM Tris-Glycine(pH 7.4), 0.15M NaCl, 40% Glycerol, 0.01% Sodium azide and 0.05% BSA
Purification	Affinity Purified

Immunogen

Gene Name	HLA-A
Alternative Names	Aw-68; HLA class I histocompatibility antigen; A-28 alpha chain; MHC class I antigen A*68; HLA-A; MHC class I antigen HLA A heavy chain
Gene ID	3105.0
SwissProt ID	P04439

Application

Dilution Ratio	WB: 1/500-1/1000 IHC: 1/50-1/100 IF: 1/50-1/200 IP: 1/20
Molecular Weight	Calculated MW: 41 kDa; Observed MW: 41 kDa

Product Name: HLA A Rabbit Monoclonal Antibody
Catalog #: AMRe02094



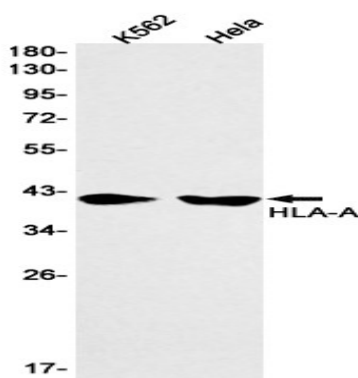
Background

Major histocompatibility complex (MHC) molecules form an integral part of the immune response system. They are cell-surface receptors that bind peptides and present them to T lymphocytes. HLA-A, -B and -C encode membrane anchored heavy chains which heterodimerize with a light chain (b-2-Microglobulin) to form MHC-I. Polymorphisms yield hundreds of HLA-A, -B and -C alleles.

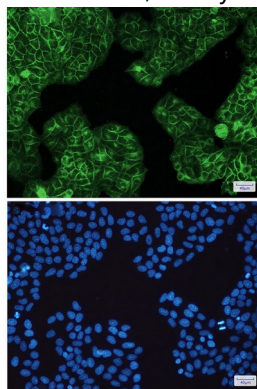
Research Area

Immunology

Image Data

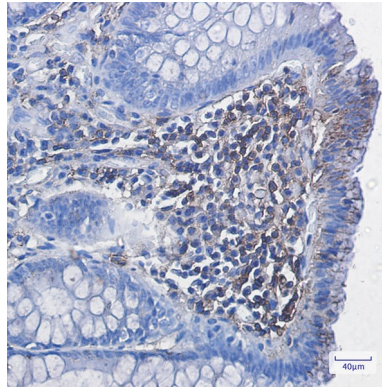


Western blot analysis of HLAA in K562, HeLa lysates using HLA A antibody.



Immunocytochemistry analysis of HLA A(green) in HeLa using HLA A antibody,and DAPI(blue)

Product Name: HLA A Rabbit Monoclonal Antibody
Catalog #: AMRe02094



Immunohistochemistry analysis of paraffin-embedded Human colon cancer using HLA A antibody. High-pressure and temperature Sodium Citrate pH 6.0 was used for antigen retrieval.

Note

For research use only.