
Summary

Production Name	GSK3 alpha Rabbit Monoclonal Antibody
Description	Recombinant Rabbit Monoclonal antibody
Host	Rabbit
Application	WB,ICC/IF,IP
Reactivity	Human,Mouse,Rat

Performance

Conjugation	Unconjugated
Modification	Unmodified
Isotype	IgG
Clonality	Monoclonal Antibody
Form	Liquid
Storage	Store at 4°C short term. Aliquot and store at -20°C long term. Avoid freeze/thaw cycles.
Buffer	50mM Tris-Glycine(pH 7.4), 0.15M NaCl, 40% Glycerol, 0.01% Sodium azide and 0.05% BSA
Purification	Affinity Purified

Immunogen

Gene Name	GSK3A
Alternative Names	Serine/threonine-protein kinase GSK3A
Gene ID	2931
SwissProt ID	P49840

Application

Dilution Ratio	WB: 1/500-1/1000 IF: 1/50-1/200 IP: 1/20
Molecular Weight	Calculated MW: 51 kDa; Observed MW: 51 kDa

Background

Product Name: GSK3 alpha Rabbit Monoclonal Antibody
Catalog #: AMRe02064

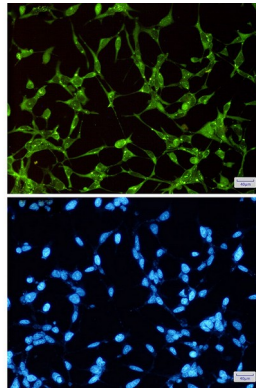


GSK3A a proline-directed protein kinase of the GSK family. Implicated in the control of several regulatory proteins including glycogen synthase, Myb, and c-Jun. GSK3 and GSK3 have similar functions. GSK3 phosphorylates tau, the principal component of neurofibrillary tangles in Alzheimer disease and is required for maximal production of amyloid plaque peptides by secretase.

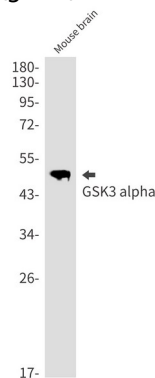
Research Area

Neuroscience

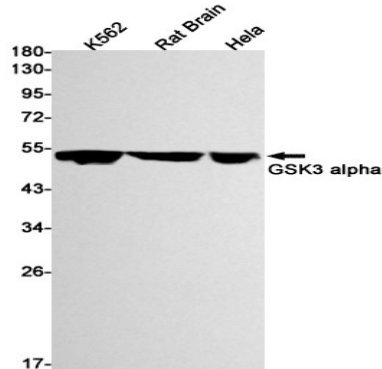
Image Data



Immunocytochemistry analysis of GSK3 alpha (green) in 293t using GSK3 alpha antibody, and DAPI (blue).



Western blot analysis of GSK3 alpha in mouse brain lysates using GSK3 alpha antibody.



Product Name: GSK3 alpha Rabbit Monoclonal Antibody
Catalog #: AMRe02064



Western blot analysis of GSK3 alpha in K562, rat Brain, Hela lysates using GSK3 alpha antibody

Note

For research use only.