
Summary

Production Name	GPD2 Rabbit Monoclonal Antibody
Description	Recombinant Rabbit Monoclonal antibody
Host	Rabbit
Application	WB,IP
Reactivity	Human,Mouse,Rat

Performance

Conjugation	Unconjugated
Modification	Unmodified
Isotype	IgG
Clonality	Monoclonal Antibody
Form	Liquid
Storage	Store at 4°C short term. Aliquot and store at -20°C long term. Avoid freeze/thaw cycles.
Buffer	50mM Tris-Glycine(pH 7.4), 0.15M NaCl, 40% Glycerol, 0.01% Sodium azide and 0.05% BSA
Purification	Affinity Purified

Immunogen

Gene Name	GPD2
Alternative Names	GDH2; GPDM; mGPDH
Gene ID	2820
SwissProt ID	P43304

Application

Dilution Ratio	WB: 1/500-1/1000 IP: 1/20
Molecular Weight	Calculated MW: 81 kDa; Observed MW: 81 kDa

Background

Product Name: GPD2 Rabbit Monoclonal Antibody
Catalog #: AMRe02059

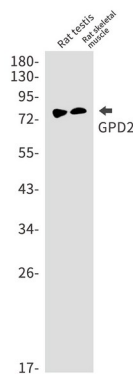


Glycerol-3-phosphate dehydrogenase, mitochondrial

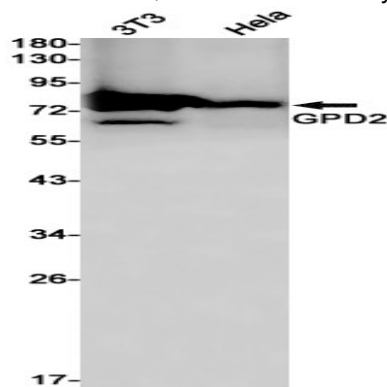
Research Area

Tags & Cell Markers

Image Data



Western blot analysis of GPD2 in rat testis, rat skeletal muscle lysates using GPD2 antibody.



Western blot analysis of GPD2 in K562, HeLa lysates using GPD2 antibody.

Note

For research use only.