

Summary

Production Name	LGR6 Rabbit Monoclonal Antibody
Description	Recombinant Rabbit Monoclonal antibody
Host	Rabbit
Application	WB,IHC-F,IHC-P,ICC/IF
Reactivity	Human,Mouse,Rat

Performance

Conjugation	Unconjugated
Modification	Unmodified
Isotype	IgG
Clonality	Monoclonal Antibody
Form	Liquid
Storage	Store at 4°C short term. Aliquot and store at -20°C long term. Avoid freeze/thaw cycles.
Buffer	50mM Tris-Glycine(pH 7.4), 0.15M NaCl, 40% Glycerol, 0.01% Sodium azide and 0.05% BSA
Purification	Affinity Purified

Immunogen

Gene Name	LGR6
Alternative Names	GPCR; Lgr6
Gene ID	59352
SwissProt ID	Q9HBX8

Application

Dilution Ratio	WB: 1/500-1/1000 IHC: 1/50-1/100 IF: 1/50-1/200
Molecular Weight	Calculated MW: 104 kDa; Observed MW: 104 kDa

Background

Product Name: LGR6 Rabbit Monoclonal Antibody
Catalog #: AMRe02057

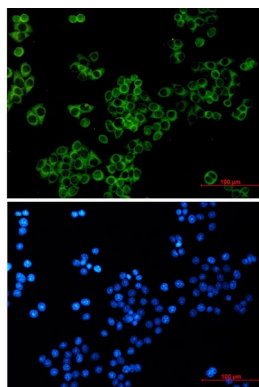


Orphan receptor.

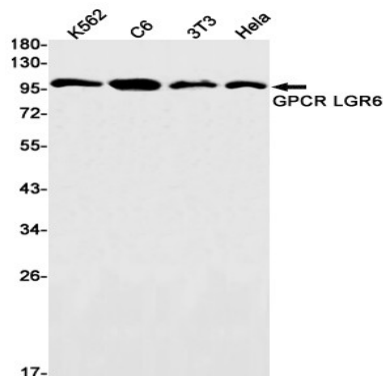
Research Area

Signal Transduction

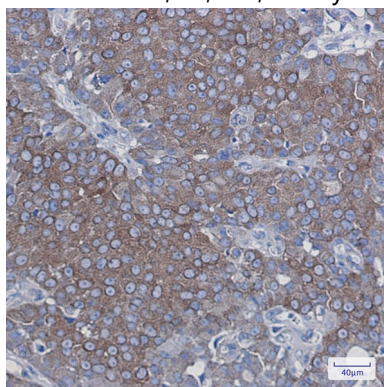
Image Data



Immunocytochemistry analysis of LGR6 (green) in HeLa using LGR6 antibody, and DAPI (blue).



Western blot analysis of GPCR LGR6 in K562, C6, 3T3, HeLa lysates using GPCR LGR6 antibody.



Immunohistochemistry analysis of paraffin-embedded Human breast cancer tissue using GPCR LGR6 antibody. High-pressure and temperature Sodium Citrate pH 6.0 was used for antigen retrieval.

Product Name: LGR6 Rabbit Monoclonal Antibody
Catalog #: AMRe02057



Note

For research use only.