

---

## Summary

<b>Production Name</b>	GPR37 Rabbit Monoclonal Antibody
<b>Description</b>	Recombinant Rabbit Monoclonal antibody
<b>Host</b>	Rabbit
<b>Application</b>	WB
<b>Reactivity</b>	Rat

## Performance

<b>Conjugation</b>	Unconjugated
<b>Modification</b>	Unmodified
<b>Isotype</b>	IgG
<b>Clonality</b>	Monoclonal Antibody
<b>Form</b>	Liquid
<b>Storage</b>	Store at 4°C short term. Aliquot and store at -20°C long term. Avoid freeze/thaw cycles.
<b>Buffer</b>	50mM Tris-Glycine(pH 7.4), 0.15M NaCl, 40% Glycerol, 0.01% Sodium azide and 0.05% BSA
<b>Purification</b>	Affinity Purified

## Immunogen

<b>Gene Name</b>	GPR37
<b>Alternative Names</b>	GPR37; Probable G-protein coupled receptor 37; Endothelin B receptor-like protein 1; ETBR-LP-1; Parkin-associated endothelin receptor-like receptor; PAELR
<b>Gene ID</b>	2861
<b>SwissProt ID</b>	O15354

## Application

<b>Dilution Ratio</b>	WB: 1/500-1/1000
<b>Molecular Weight</b>	Calculated MW: 67 kDa; Observed MW: 67 kDa

**Product Name: GPR37 Rabbit Monoclonal Antibody**  
**Catalog #: AMRe02056**



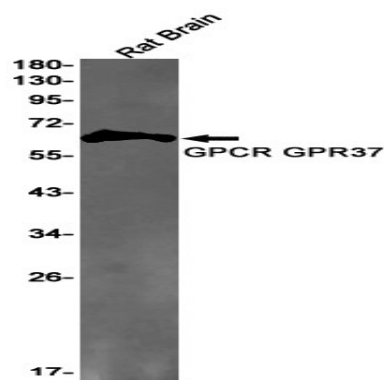
## Background

Receptor for the neuroprotective and glioprotective factor prosaposin. Ligand binding induces endocytosis, followed by an ERK phosphorylation cascade.

## Research Area

Signal Transduction

## Image Data



Western blot analysis of GPCR GPR37 in rat Brain lysates using GPR37 antibody.

## Note

For research use only.