

**Product Name: Glycogen Synthase 1 Rabbit Monoclonal Antibody**  
**Catalog #: AMRe02048**



---

## Summary

<b>Production Name</b>	Glycogen Synthase 1 Rabbit Monoclonal Antibody
<b>Description</b>	Recombinant Rabbit Monoclonal antibody
<b>Host</b>	Rabbit
<b>Application</b>	WB,ICC/IF,IP
<b>Reactivity</b>	Human,Rat

## Performance

<b>Conjugation</b>	Unconjugated
<b>Modification</b>	Unmodified
<b>Isotype</b>	IgG
<b>Clonality</b>	Monoclonal Antibody
<b>Form</b>	Liquid
<b>Storage</b>	Store at 4°C short term. Aliquot and store at -20°C long term. Avoid freeze/thaw cycles.
<b>Buffer</b>	50mM Tris-Glycine(pH 7.4), 0.15M NaCl, 40% Glycerol, 0.01% Sodium azide and 0.05% BSA
<b>Purification</b>	Affinity Purified

## Immunogen

<b>Gene Name</b>	GYS1
<b>Alternative Names</b>	GYS1; GYS; Glycogen [starch] synthase; muscle
<b>Gene ID</b>	2997
<b>SwissProt ID</b>	P13807

## Application

<b>Dilution Ratio</b>	WB: 1/500-1/1000 IF: 1/50-1/200 IP: 1/20
<b>Molecular Weight</b>	Calculated MW: 84 kDa; Observed MW: 84 kDa

**Product Name: Glycogen Synthase 1 Rabbit Monoclonal Antibody**  
**Catalog #: AMRe02048**



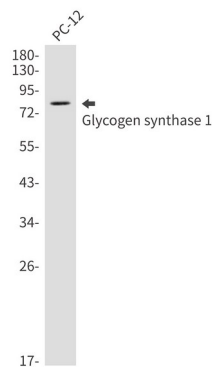
## Background

Transfers the glycosyl residue from UDP-Glc to the non-reducing end of alpha-1,4-glucan. Allosteric activation by glucose-6-phosphate. Phosphorylation reduces the activity towards UDP-glucose. When in the non-phosphorylated state, glycogen synthase does not require glucose-6-phosphate as an allosteric activator; when phosphorylated it does.

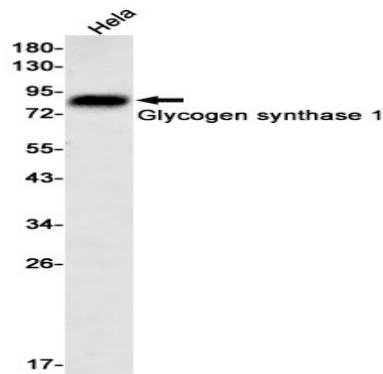
## Research Area

Signal Transduction

## Image Data



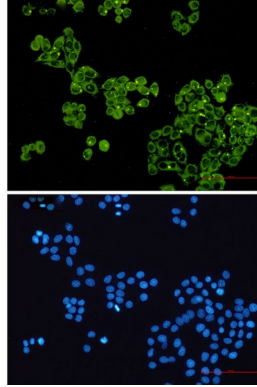
Western blot analysis of Glycogen synthase 1 in PC-12 lysates using Glycogen Synthase 1 antibody.



Western blot analysis of Glycogen synthase 1 in HeLa lysates using Glycogen synthase 1 antibody.

**Product Name: Glycogen Synthase 1 Rabbit Monoclonal Antibody**  
**Catalog #: AMRe02048**

---



Immunocytochemistry analysis of Glycogen synthase 1 (green) in HeLa using Glycogen synthase 1 antibody, and DAPI (blue)

**Note**

For research use only.