

Summary

Production Name	SMN Rabbit Monoclonal Antibody
Description	Recombinant Rabbit Monoclonal antibody
Host	Rabbit
Application	WB,ICC/IF
Reactivity	Human

Performance

Conjugation	Unconjugated
Modification	Unmodified
Isotype	IgG
Clonality	Monoclonal Antibody
Form	Liquid
Storage	Store at 4°C short term. Aliquot and store at -20°C long term. Avoid freeze/thaw cycles.
Buffer	50mM Tris-Glycine(pH 7.4), 0.15M NaCl, 40% Glycerol, 0.01% Sodium azide and 0.05% BSA
Purification	Affinity Purified

Immunogen

Gene Name	SMN1
Alternative Names	SMN1; SMN; SMNT; SMN2; SMNC; Survival motor neuron protein; Component of gems 1; Gemin-1
Gene ID	6606
SwissProt ID	Q16637

Application

Dilution Ratio	WB: 1/500-1/1000 IF: 1/50-1/200
Molecular Weight	Calculated MW: 32 kDa; Observed MW: 35 kDa

Product Name: SMN Rabbit Monoclonal Antibody
Catalog #: AMRe02029



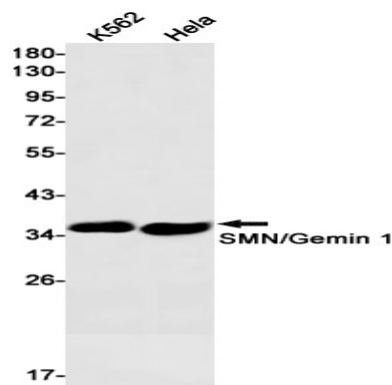
Background

The SMN complex plays an essential role in spliceosomal snRNP assembly in the cytoplasm and is required for pre-mRNA splicing in the nucleus. It may also play a role in the metabolism of snoRNPs.

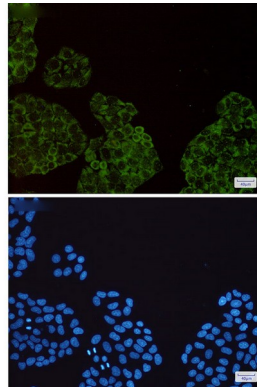
Research Area

Neuroscience

Image Data



Western blot analysis of SMN/Gemin 1 in K562, HeLa lysates using SMN antibody.



Immunocytochemistry analysis of Gemin 1 (green) in HeLa using Gemin 1 antibody, and DAPI (blue)

Note

For research use only.