

## Summary

|                        |  |
|------------------------|--|
| <b>Production Name</b> | GCET2 Rabbit Monoclonal Antibody       |
| <b>Description</b>     | Recombinant Rabbit Monoclonal antibody |
| <b>Host</b>            | Rabbit                                 |
| <b>Application</b>     | WB,IHC-F,IHC-P,ICC/IF                  |
| <b>Reactivity</b>      | Human                                  |

## Performance

|                     |  |
|---------------------|--|
| <b>Conjugation</b>  | Unconjugated   |
| <b>Modification</b> | Unmodified   |
| <b>Isotype</b>      | IgG  |
| <b>Clonality</b>    | Monoclonal Antibody  |
| <b>Form</b>         | Liquid   |
| <b>Storage</b>      | Store at 4°C short term. Aliquot and store at -20°C long term. Avoid freeze/thaw cycles. |
| <b>Buffer</b>       | 50mM Tris-Glycine(pH 7.4), 0.15M NaCl, 40% Glycerol, 0.01% Sodium azide and 0.05% BSA    |
| <b>Purification</b> | Affinity Purified  |

## Immunogen

|                          |                                      |
|--------------------------|--------------------------------------|
| <b>Gene Name</b>         | GCSAM                                |
| <b>Alternative Names</b> | GCAT2; Gcet; Gcsam; hGAL; M17; M17 L |
| <b>Gene ID</b>           | 257144                               |
| <b>SwissProt ID</b>      | Q8N6F7                               |

## Application

|                         |   |
|-------------------------|---|
| <b>Dilution Ratio</b>   | WB: 1/500-1/1000 IHC: 1/50-1/100 IF: 1/50-1/200 |
| <b>Molecular Weight</b> | Calculated MW: 21 kDa; Observed MW: 21 kDa      |

## Background

**Product Name: GCET2 Rabbit Monoclonal Antibody**  
**Catalog #: AMRe02023**

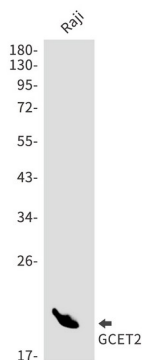


Involved in the negative regulation of lymphocyte motility. It mediates the migration-inhibitory effects of IL6. Serves as a positive regulator of the RhoA signaling pathway. Enhancement of RhoA activation results in inhibition of lymphocyte and lymphoma cell motility by activation of its downstream effector ROCK. Is a regulator of B-cell receptor signaling, that acts through SYK kinase activation.

## Research Area

Immunology

## Image Data



Western blot analysis of GCET2 in Raji lysates using GCET2 antibody.

## Note

For research use only.