

Product Name: Galactosidase alpha Rabbit Monoclonal Antibody
Catalog #: AMRe02016



Summary

Production Name	Galactosidase alpha Rabbit Monoclonal Antibody
Description	Recombinant Rabbit Monoclonal antibody
Host	Rabbit
Application	WB,IHC-P,IP
Reactivity	Human

Performance

Conjugation	Unconjugated
Modification	Unmodified
Isotype	IgG
Clonality	Monoclonal Antibody
Form	Liquid
Storage	Store at 4°C short term. Aliquot and store at -20°C long term. Avoid freeze/thaw cycles.
Buffer	50mM Tris-Glycine(pH 7.4), 0.15M NaCl, 40% Glycerol, 0.01% Sodium azide and 0.05% BSA
Purification	Affinity Purified

Immunogen

Gene Name	GLA
Alternative Names	Alpha gal A; GALA; Galactosidase; alpha; GLA; Melibiase
Gene ID	2717
SwissProt ID	P06280

Application

Dilution Ratio	WB: 1/500-1/1000 IHC: 1/50-1/100 IP: 1/20
Molecular Weight	Calculated MW: 49 kDa; Observed MW: 49 kDa

Product Name: Galactosidase alpha Rabbit Monoclonal Antibody
Catalog #: AMRe02016



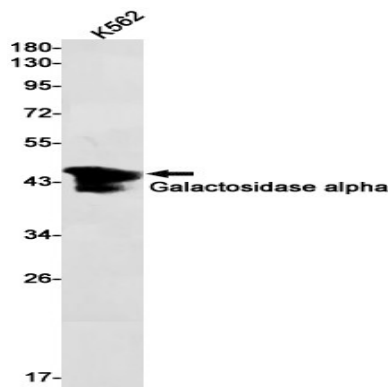
Background

Defects in GLA are the cause of Fabry disease (FD) [MIM:301500]. FD is a rare X-linked sphingolipidosis disease where glycolipid accumulates in many tissues. The disease consists of an inborn error of glycosphingolipid catabolism.

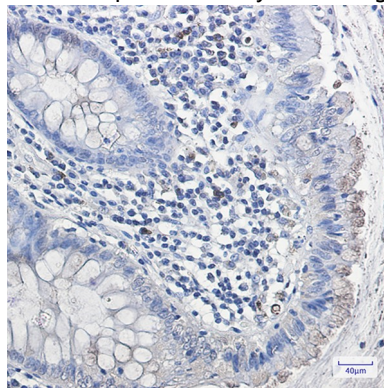
Research Area

Cardiovascular

Image Data



Western blot analysis of Galactosidase alpha in K562 lysates using Galactosidase alpha antibody.



Immunohistochemistry analysis of paraffin-embedded Human colon cancer using Galactosidase alpha antibody. High-pressure and temperature Sodium Citrate pH 6.0 was used for antigen retrieval.

Note

For research use only.