

## Summary

<b>Production Name</b>	Fragilis Rabbit Monoclonal Antibody
<b>Description</b>	Recombinant Rabbit Monoclonal antibody
<b>Host</b>	Rabbit
<b>Application</b>	WB,IHC-F,IHC-P,ICC/IF
<b>Reactivity</b>	Human

## Performance

<b>Conjugation</b>	Unconjugated
<b>Modification</b>	Unmodified
<b>Isotype</b>	IgG
<b>Clonality</b>	Monoclonal Antibody
<b>Form</b>	Liquid
<b>Storage</b>	Store at 4°C short term. Aliquot and store at -20°C long term. Avoid freeze/thaw cycles.
<b>Buffer</b>	50mM Tris-Glycine(pH 7.4), 0.15M NaCl, 40% Glycerol, 0.01% Sodium azide and 0.05% BSA
<b>Purification</b>	Affinity Purified

## Immunogen

<b>Gene Name</b>	IFITM3
<b>Alternative Names</b>	IFITM3; Interferon-induced transmembrane protein 3; Dispanin subfamily A member 2b; DSPA2b; Interferon-inducible protein 1-8U
<b>Gene ID</b>	10410
<b>SwissProt ID</b>	Q01628

## Application

<b>Dilution Ratio</b>	WB: 1/500-1/1000 IHC: 1/50-1/100 IF: 1/50-1/200
<b>Molecular Weight</b>	Calculated MW: 15 kDa; Observed MW: 15 kDa

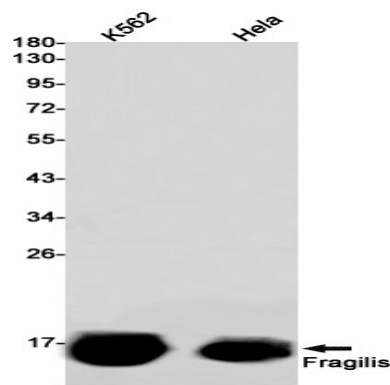
## Background

IFN-induced antiviral protein that mediates cellular innate immunity to at least three major human pathogens, namely influenza A H1N1 virus, West Nile virus (WNV), and dengue virus (WNV), by inhibiting the early step(s) of replication.

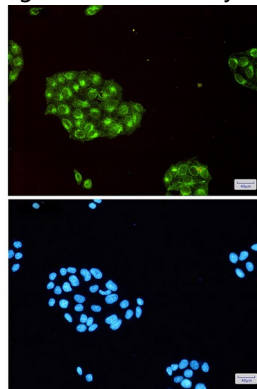
## Research Area

Stem Cells

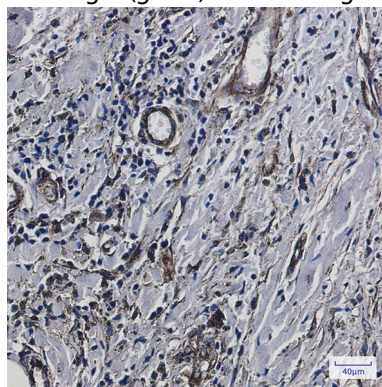
## Image Data



Western blot analysis of Fragilis in K562, HeLa lysates using Fragilis antibody.



Immunocytochemistry analysis of Fragilis (green) in HeLa using Fragilis antibody, and DAPI (blue)



Immunohistochemistry analysis of paraffin-embedded Human breast cancer using Fragilis antibody. High-pressure and

**Product Name: Fragilis Rabbit Monoclonal Antibody**  
**Catalog #: AMRe02003**



---

temperature Sodium Citrate pH 6.0 was used for antigen retrieval.

**Note**

For research use only.