
Summary

Production Name	FLI1 Rabbit Monoclonal Antibody
Description	Recombinant Rabbit Monoclonal antibody
Host	Rabbit
Application	WB,IHC-P
Reactivity	Human,Rat

Performance

Conjugation	Unconjugated
Modification	Unmodified
Isotype	IgG
Clonality	Monoclonal Antibody
Form	Liquid
Storage	Store at 4°C short term. Aliquot and store at -20°C long term. Avoid freeze/thaw cycles.
Buffer	50mM Tris-Glycine(pH 7.4), 0.15M NaCl, 40% Glycerol, 0.01% Sodium azide and 0.05% BSA
Purification	Affinity Purified

Immunogen

Gene Name	FLI1
Alternative Names	FLI1; Friend leukemia integration 1 transcription factor; Proto-oncogene Fli-1; Transcription factor ERGB
Gene ID	2313
SwissProt ID	Q01543

Application

Dilution Ratio	WB: 1/500-1/1000 IHC: 1/50-1/100
Molecular Weight	Calculated MW: 51 kDa; Observed MW: 51 kDa

Product Name: FLI1 Rabbit Monoclonal Antibody
Catalog #: AMRe01990



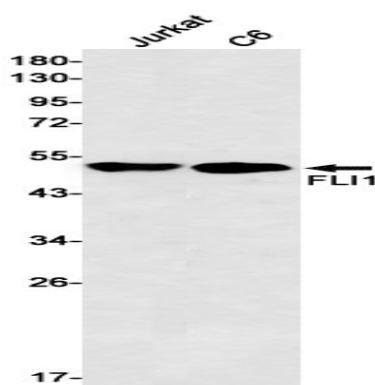
Background

FLI1 Sequence-specific transcriptional activator. Recognizes the DNA sequence 5'-C[CA]GGAAGT-3'. Belongs to the ETS family. Can form homodimers or heterodimers with ETV6/TEL1. 2 isoforms of the human protein are produced by alternative splicing.

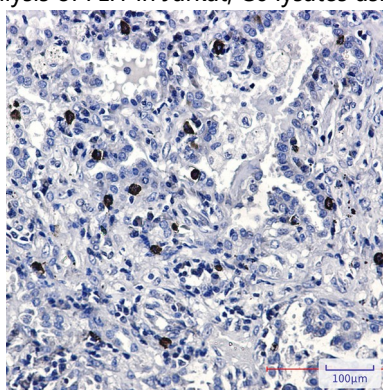
Research Area

Cell Biology

Image Data



Western blot analysis of FLI1 in Jurkat, C6 lysates using FLI1 antibody.



Immunohistochemistry analysis of paraffin-embedded Human lung cancer using FLI1 antibody. High-pressure and temperature Sodium Citrate pH 6.0 was used for antigen retrieval.

Note

For research use only.