

---

## Summary

<b>Production Name</b>	Ezrin Rabbit Monoclonal Antibody
<b>Description</b>	Recombinant Rabbit Monoclonal antibody
<b>Host</b>	Rabbit
<b>Application</b>	WB,IHC-P,IP
<b>Reactivity</b>	Human

## Performance

<b>Conjugation</b>	Unconjugated
<b>Modification</b>	Unmodified
<b>Isotype</b>	IgG
<b>Clonality</b>	Monoclonal Antibody
<b>Form</b>	Liquid
<b>Storage</b>	Store at 4°C short term. Aliquot and store at -20°C long term. Avoid freeze/thaw cycles.
<b>Buffer</b>	50mM Tris-Glycine(pH 7.4), 0.15M NaCl, 40% Glycerol, 0.01% Sodium azide and 0.05% BSA
<b>Purification</b>	Affinity Purified

## Immunogen

<b>Gene Name</b>	EZR
<b>Alternative Names</b>	EZR; VIL2; Ezrin; Cytovillin; Villin-2; p81
<b>Gene ID</b>	7430
<b>SwissProt ID</b>	P15311

## Application

<b>Dilution Ratio</b>	WB: 1/500-1/1000 IHC: 1/50-1/100 IP: 1/20
<b>Molecular Weight</b>	Calculated MW: 69 kDa; Observed MW: 80 kDa

## Background

---

**Product Name: Ezrin Rabbit Monoclonal Antibody**  
**Catalog #: AMRe01966**

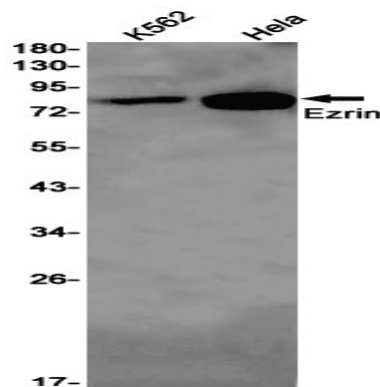


Probably involved in connections of major cytoskeletal structures to the plasma membrane. In epithelial cells, required for the formation of microvilli and membrane ruffles on the apical pole. Along with PLEKHG6, required for normal macropinocytosis.

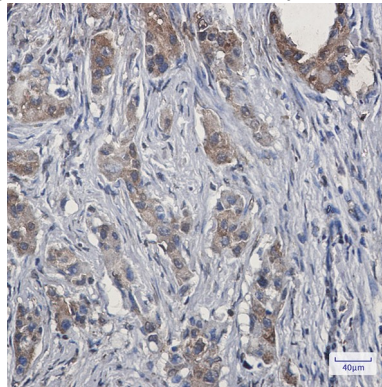
## Research Area

Cell Biology

## Image Data



Western blot analysis of Ezrin in K562, HeLa lysates using Ezrin antibody.



Immunohistochemistry analysis of paraffin-embedded Human lung cancer using Ezrin antibody. High-pressure and temperature Sodium Citrate pH 6.0 was used for antigen retrieval.

## Note

For research use only.