

Product Name: EN1 Rabbit Monoclonal Antibody
Catalog #: AMRe01947



Summary

Production Name	EN1 Rabbit Monoclonal Antibody
Description	Recombinant Rabbit Monoclonal antibody
Host	Rabbit
Application	WB,IP
Reactivity	Rat

Performance

Conjugation	Unconjugated
Modification	Unmodified
Isotype	IgG
Clonality	Monoclonal Antibody
Form	Liquid
Storage	Store at 4°C short term. Aliquot and store at -20°C long term. Avoid freeze/thaw cycles.
Buffer	50mM Tris-Glycine(pH 7.4), 0.15M NaCl, 40% Glycerol, 0.01% Sodium azide and 0.05% BSA
Purification	Affinity Purified

Immunogen

Gene Name	EN1
Alternative Names	EN1; Engrailed 1; Engrailed; Hu-En-1; Mo-en.1
Gene ID	2019
SwissProt ID	Q05925

Application

Dilution Ratio	WB: 1/500-1/1000 IP: 1/20
Molecular Weight	Calculated MW: 40 kDa; Observed MW: 50 kDa

Background

Product Name: EN1 Rabbit Monoclonal Antibody
Catalog #: AMRe01947

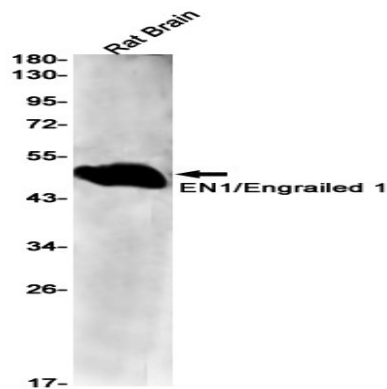


Belongs to the engrailed homeobox family.

Research Area

Neuroscience

Image Data



Western blot analysis of EN1/Engrailed 1 in rat Brain lysates using EN1 antibody.

Note

For research use only.