
Summary

Production Name	ELK1 Rabbit Monoclonal Antibody
Description	Recombinant Rabbit Monoclonal antibody
Host	Rabbit
Application	WB
Reactivity	Human,Mouse,Rat

Performance

Conjugation	Unconjugated
Modification	Unmodified
Isotype	IgG
Clonality	Monoclonal Antibody
Form	Liquid
Storage	Store at 4°C short term. Aliquot and store at -20°C long term. Avoid freeze/thaw cycles.
Buffer	50mM Tris-Glycine(pH 7.4), 0.15M NaCl, 40% Glycerol, 0.01% Sodium azide and 0.05% BSA
Purification	Affinity Purified

Immunogen

Gene Name	ELK1
Alternative Names	ETS domain-containing protein Elk-1
Gene ID	2002
SwissProt ID	P19419

Application

Dilution Ratio	WB: 1/500-1/1000
Molecular Weight	Calculated MW: 45 kDa; Observed MW: 62 kDa

Background

Product Name: ELK1 Rabbit Monoclonal Antibody
Catalog #: AMRe01943

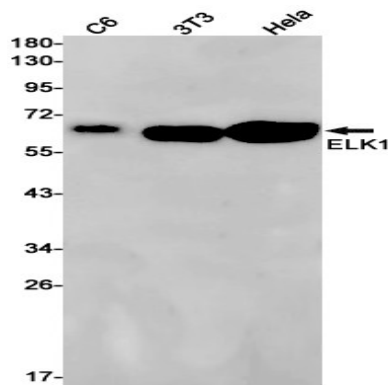


This gene is a member of the Ets family of transcription factors and of the ternary complex factor (TCF) subfamily. Proteins of the TCF subfamily form a ternary complex by binding to the the serum response factor and the serum reponse element in the promoter of the c-fos proto-oncogene. The protein encoded by this gene is a nuclear target for the ras-raf-MAPK signaling cascade.

Research Area

Signal Transduction

Image Data



Western blot analysis of ELK1 in C6, 3T3, HeLa lysates using ELK1 antibody.

Note

For research use only.