

**Product Name: Phospho-eIF4E (Ser209) Rabbit  
Monoclonal Antibody  
Catalog #: AMRe01939**

---

## Summary

<b>Production Name</b>	Phospho-eIF4E (Ser209) Rabbit Monoclonal Antibody
<b>Description</b>	Recombinant Rabbit Monoclonal antibody
<b>Host</b>	Rabbit
<b>Application</b>	WB,IHC-F,IHC-P,ICC/IF,IP
<b>Reactivity</b>	Human,Mouse,Rat

## Performance

<b>Conjugation</b>	Unconjugated
<b>Modification</b>	Phosphorylated
<b>Isotype</b>	IgG
<b>Clonality</b>	Monoclonal Antibody
<b>Form</b>	Liquid
<b>Storage</b>	Store at 4°C short term. Aliquot and store at -20°C long term. Avoid freeze/thaw cycles.
<b>Buffer</b>	50mM Tris-Glycine(pH 7.4), 0.15M NaCl, 40% Glycerol, 0.01% Sodium azide and 0.05% BSA
<b>Purification</b>	Affinity Purified

## Immunogen

<b>Gene Name</b>	EIF4E
<b>Alternative Names</b>	EIF4E; EIF4EL1; EIF4F; Eukaryotic translation initiation factor 4E; eIF-4E; eIF4E; eIF-4F 25 kDa subunit; mRNA cap-binding protein
<b>Gene ID</b>	1977
<b>SwissProt ID</b>	P06730

## Application

<b>Dilution Ratio</b>	WB: 1/500-1/1000 IHC: 1/50-1/100 IF: 1/50-1/200 IP: 1/20
<b>Molecular Weight</b>	Calculated MW: 25 kDa; Observed MW: 25 kDa

**Product Name: Phospho-eIF4E (Ser209) Rabbit  
Monoclonal Antibody  
Catalog #: AMRe01939**

---

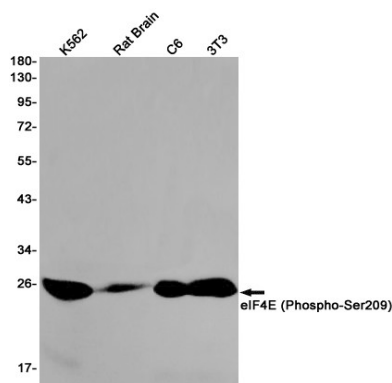
## Background

eIF4E, a protein modulates translation of maternal mRNAs in early embryos before the onset of zygotic transcription. eIF4E also influences the overall rate of translation. eIF4E binds to the 7 methyl GTP cap structure of eukaryotic mRNAs. Phosphorylation of eIF4E on serine 209 regulates the affinity of this protein for the 7 methyl GTP cap and/or RNA. Phosphorylation also enhances the interaction of eIF4E with eIF4G, which form a complex known as eIF4F. eIF4E phosphorylation is correlated with increased translational rate in a number of cell types.

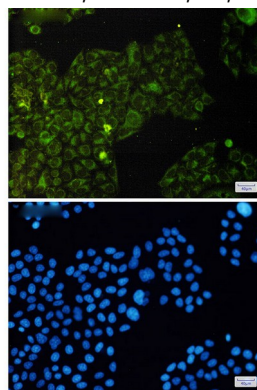
## Research Area

Epigenetics and Nuclear Signaling

## Image Data



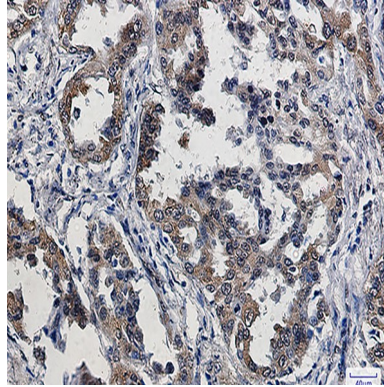
Western blot analysis of eIF4E (Phospho-Ser209) in K562, rat Brain, C6, 3T3 lysates using Phospho-eIF4E (Ser209) antibody.



Immunocytochemistry analysis of eIF4E (Phospho-Ser209)(green) in HeLa using eIF4E (Phospho-Ser209) antibody, and DAPI(blue)

**Product Name: Phospho-eIF4E (Ser209) Rabbit  
Monoclonal Antibody  
Catalog #: AMRe01939**

---



Immunohistochemistry analysis of paraffin-embedded Human lung cancer using Phospho-eIF4E (Ser209) antibody. High-pressure and temperature Sodium Citrate pH 6.0 was used for antigen retrieval.

**Note**

For research use only.