

Summary

Production Name	EHD1 Rabbit Monoclonal Antibody
Description	Recombinant Rabbit Monoclonal antibody
Host	Rabbit
Application	WB,ICC/IF,IP
Reactivity	Human,Mouse,Rat

Performance

Conjugation	Unconjugated
Modification	Unmodified
Isotype	IgG
Clonality	Monoclonal Antibody
Form	Liquid
Storage	Store at 4°C short term. Aliquot and store at -20°C long term. Avoid freeze/thaw cycles.
Buffer	50mM Tris-Glycine(pH 7.4), 0.15M NaCl, 40% Glycerol, 0.01% Sodium azide and 0.05% BSA
Purification	Affinity Purified

Immunogen

Gene Name	EHD1
Alternative Names	EHD1; H PAST; hPAST1; PAST; PAST homolog 1; PAST1; Tilin
Gene ID	10938
SwissProt ID	Q9H4M9

Application

Dilution Ratio	WB: 1/500-1/1000 IF: 1/50-1/200 IP: 1/20
Molecular Weight	Calculated MW: 61 kDa; Observed MW: 61 kDa

Background

Product Name: EHD1 Rabbit Monoclonal Antibody
Catalog #: AMRe01931

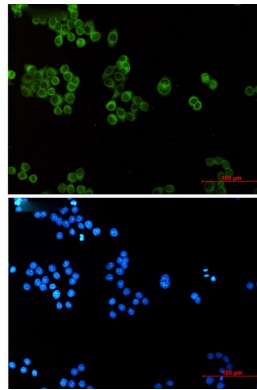


Acts in early endocytic membrane fusion and membrane trafficking of recycling endosomes.

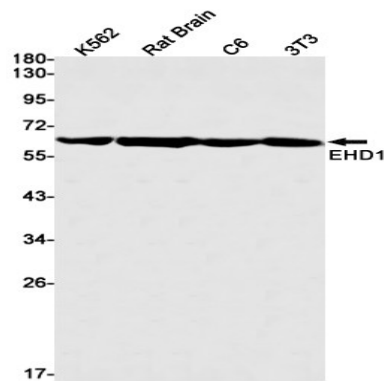
Research Area

Cardiovascular

Image Data



Immunocytochemistry analysis of EHD1 (green) in HeLa using EHD1 antibody, and DAPI (blue).



Western blot analysis of EHD1 in K562, rat Brain, C6, 3T3 lysates using EHD1 antibody.

Note

For research use only.