

**Product Name: Phospho-EGFR (Tyr1092) Rabbit  
Monoclonal Antibody  
Catalog #: AMRe01930**

---

## Summary

<b>Production Name</b>	Phospho-EGFR (Tyr1092) Rabbit Monoclonal Antibody
<b>Description</b>	Recombinant Rabbit Monoclonal antibody
<b>Host</b>	Rabbit
<b>Application</b>	WB,IHC-P
<b>Reactivity</b>	Human,Mouse,Rat

## Performance

<b>Conjugation</b>	Unconjugated
<b>Modification</b>	Phosphorylated
<b>Isotype</b>	IgG
<b>Clonality</b>	Monoclonal Antibody
<b>Form</b>	Liquid
<b>Storage</b>	Store at 4°C short term. Aliquot and store at -20°C long term. Avoid freeze/thaw cycles.
<b>Buffer</b>	50mM Tris-Glycine(pH 7.4), 0.15M NaCl, 40% Glycerol, 0.01% Sodium azide and 0.05% BSA
<b>Purification</b>	Affinity Purified

## Immunogen

<b>Gene Name</b>	EGFR
<b>Alternative Names</b>	EGFR; ERBB; ERBB1; HER1; Epidermal growth factor receptor; Proto-oncogene c-ErbB-1; Receptor tyrosine-protein kinase erbB-1
<b>Gene ID</b>	1956
<b>SwissProt ID</b>	P00533

## Application

<b>Dilution Ratio</b>	WB: 1/500-1/1000 IHC: 1/50-1/100
<b>Molecular Weight</b>	Calculated MW: 134 kDa; Observed MW: 175 kDa

**Product Name: Phospho-EGFR (Tyr1092) Rabbit Monoclonal Antibody**  
**Catalog #: AMRe01930**

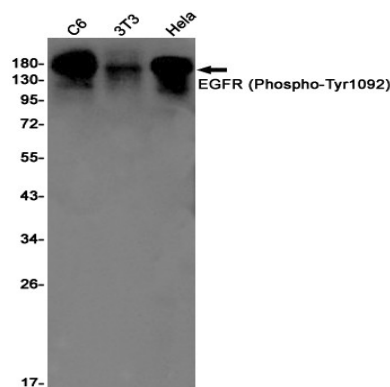
## Background

EGFR is a receptor tyrosine kinase. Receptor for epidermal growth factor (EGF) and related growth factors including TGF- $\alpha$ , amphiregulin, betacellulin, heparin-binding EGF-like growth factor, GP30 and vaccinia virus growth factor. Is involved in the control of cell growth and differentiation. . A single-pass transmembrane tyrosine kinase. Ligand binding to this receptor results in receptor dimerization, autophosphorylation (in trans), activation of various downstream signaling molecules and lysosomal degradation.

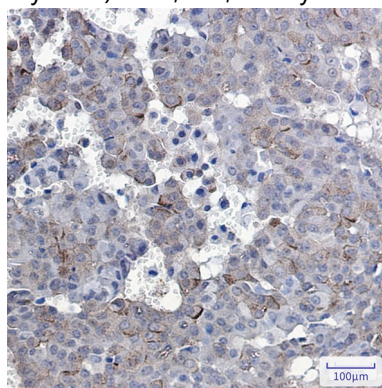
## Research Area

Signal Transduction

## Image Data



Western blot analysis of EGFR (Phospho-Tyr1092) in C6, 3T3, HeLa lysates using Phospho-EGFR (Tyr1092) antibody.



Immunohistochemistry analysis of paraffin-embedded Human breast cancer using Phospho-EGFR (Tyr1092) antibody. High-pressure and temperature Sodium Citrate pH 6.0 was used for antigen retrieval.

## Note

For research use only.

**Product Name: Phospho-EGFR (Tyr1092) Rabbit  
Monoclonal Antibody  
Catalog #: AMRe01930**

---

