

**Product Name: Elongation Factor 1A1 Rabbit
Monoclonal Antibody
Catalog #: AMRe01928**

Summary

Production Name	Elongation Factor 1A1 Rabbit Monoclonal Antibody
Description	Recombinant Rabbit Monoclonal antibody
Host	Rabbit
Application	WB,IHC-P,IP
Reactivity	Human,Mouse,Rat

Performance

Conjugation	Unconjugated
Modification	Unmodified
Isotype	IgG
Clonality	Monoclonal Antibody
Form	Liquid
Storage	Store at 4°C short term. Aliquot and store at -20°C long term. Avoid freeze/thaw cycles.
Buffer	50mM Tris-Glycine(pH 7.4), 0.15M NaCl, 40% Glycerol, 0.01% Sodium azide and 0.05% BSA
Purification	Affinity Purified

Immunogen

Gene Name	EEF1A1
Alternative Names	EEF1A1; CCS-3; CCS3; EEF-1; EEF1A; EF-Tu; EF1A; GRAF-1EF; LENG7; PT11; eEF1A-1
Gene ID	1915
SwissProt ID	P68104

Application

Dilution Ratio	WB: 1/500-1/1000 IHC: 1/50-1/100 IP: 1/20
Molecular Weight	Calculated MW: 50 kDa; Observed MW: 50 kDa

**Product Name: Elongation Factor 1A1 Rabbit
Monoclonal Antibody
Catalog #: AMRe01928**

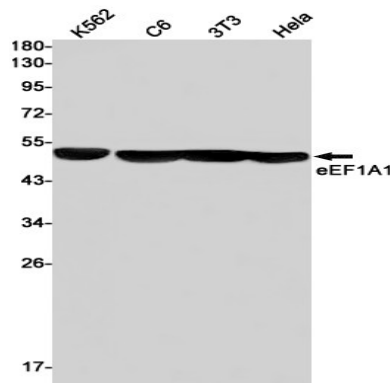
Background

This protein promotes the GTP-dependent binding of aminoacyl-tRNA to the A-site of ribosomes during protein biosynthesis.

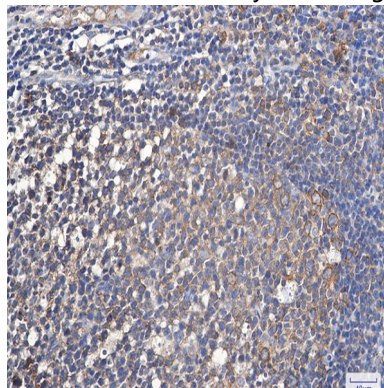
Research Area

Epigenetics and Nuclear Signaling

Image Data



Western blot analysis of eEF1A1 in K562, C6, 3T3, HeLa lysates using Elongation Factor 1A1 antibody.



Immunohistochemistry analysis of paraffin-embedded Human tonsil using eEF1A1 antibody. High-pressure and temperature Sodium Citrate pH 6.0 was used for antigen retrieval.

Note

For research use only.