

Product Name: Cytochrome C Rabbit Monoclonal Antibody
Catalog #: AMRe01881

Summary

| | |
|------------------------|---|
| Production Name | Cytochrome C Rabbit Monoclonal Antibody |
| Description | Recombinant Rabbit Monoclonal antibody |
| Host | Rabbit |
| Application | WB,ICC/IF,IP |
| Reactivity | Human,Mouse,Rat |

Performance

| | |
|---------------------|--|
| Conjugation | Unconjugated |
| Modification | Unmodified |
| Isotype | IgG |
| Clonality | Monoclonal Antibody |
| Form | Liquid |
| Storage | Store at 4°C short term. Aliquot and store at -20°C long term. Avoid freeze/thaw cycles. |
| Buffer | 50mM Tris-Glycine(pH 7.4), 0.15M NaCl, 40% Glycerol, 0.01% Sodium azide and 0.05% BSA |
| Purification | Affinity Purified |

Immunogen

| | |
|--------------------------|-------------------------|
| Gene Name | CYCS |
| Alternative Names | CYCS; CYC; Cytochrome c |
| Gene ID | 54205 |
| SwissProt ID | P99999 |

Application

| | |
|-------------------------|--|
| Dilution Ratio | WB: 1/500-1/1000 IF: 1/50-1/200 IP: 1/20 |
| Molecular Weight | Calculated MW: 12 kDa; Observed MW: 12 kDa |

Product Name: Cytochrome C Rabbit Monoclonal Antibody
Catalog #: AMRe01881

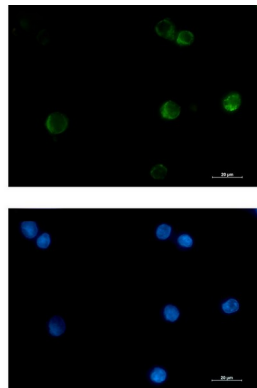
Background

CYCS Electron carrier protein. The oxidized form of the cytochrome c heme group can accept an electron from the heme group of the cytochrome c1 subunit of cytochrome reductase. Cytochrome c then transfers this electron to the cytochrome oxidase complex, the final protein carrier in the mitochondrial electron-transport chain.

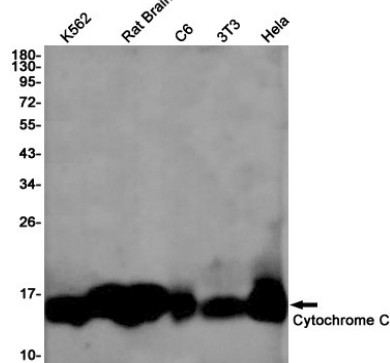
Research Area

Cardiovascular

Image Data



Immunocytochemistry analysis of Cytochrome C (green) in K562 using Cytochrome C antibody, and DAPI (blue).



Western blot analysis of Cytochrome C in K562, rat Brain, C6, 3T3, HeLa lysates using Cytochrome C antibody.

Note

For research use only.