

**Product Name: Cytochrome P450 1B1 Rabbit
Monoclonal Antibody
Catalog #: AMRe01878**

Summary

Production Name	Cytochrome P450 1B1 Rabbit Monoclonal Antibody
Description	Recombinant Rabbit Monoclonal antibody
Host	Rabbit
Application	WB,IHC-P
Reactivity	Human,Rat

Performance

Conjugation	Unconjugated
Modification	Unmodified
Isotype	IgG
Clonality	Monoclonal Antibody
Form	Liquid
Storage	Store at 4°C short term. Aliquot and store at -20°C long term. Avoid freeze/thaw cycles.
Buffer	50mM Tris-Glycine(pH 7.4), 0.15M NaCl, 40% Glycerol, 0.01% Sodium azide and 0.05% BSA
Purification	Affinity Purified

Immunogen

Gene Name	CYP1B1
Alternative Names	CYP1B1; Cytochrome P450 1B1; CYP1B1
Gene ID	1545
SwissProt ID	Q16678

Application

Dilution Ratio	WB: 1/500-1/1000 IHC: 1/50-1/100
Molecular Weight	Calculated MW: 61 kDa; Observed MW: 61 kDa

**Product Name: Cytochrome P450 1B1 Rabbit
Monoclonal Antibody
Catalog #: AMRe01878**

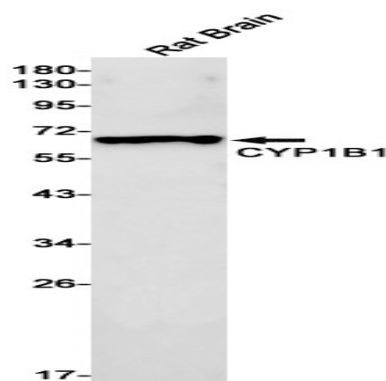
Background

Cytochromes P450 are a group of heme-thiolate monooxygenases. In liver microsomes, this enzyme is involved in an NADPH-dependent electron transport pathway. It oxidizes a variety of structurally unrelated compounds, including steroids, fatty acids, and xenobiotics.

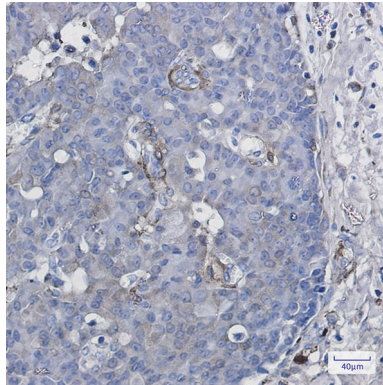
Research Area

Cardiovascular

Image Data



Western blot analysis of CYP1B1 in rat Brain lysates using Cytochrome P450 1B1 antibody.



Immunohistochemistry analysis of paraffin-embedded Human breast cancer using CYP1B1 antibody. High-pressure and temperature Sodium Citrate pH 6.0 was used for antigen retrieval.

Note

For research use only.