

Summary

Production Name	CYFIP1 Rabbit Monoclonal Antibody
Description	Recombinant Rabbit Monoclonal antibody
Host	Rabbit
Application	WB
Reactivity	Human,Mouse,Rat

Performance

Conjugation	Unconjugated
Modification	Unmodified
Isotype	IgG
Clonality	Monoclonal Antibody
Form	Liquid
Storage	Store at 4°C short term. Aliquot and store at -20°C long term. Avoid freeze/thaw cycles.
Buffer	50mM Tris-Glycine(pH 7.4), 0.15M NaCl, 40% Glycerol, 0.01% Sodium azide and 0.05% BSA
Purification	Affinity Purified

Immunogen

Gene Name	CYFIP1
Alternative Names	SHYC; SRA1; SRA-1; P140SRA-1
Gene ID	23191
SwissProt ID	Q7L576

Application

Dilution Ratio	WB: 1/500-1/1000
Molecular Weight	Calculated MW: 145 kDa; Observed MW: 145 kDa

Background

Product Name: CYFIP1 Rabbit Monoclonal Antibody
Catalog #: AMRe01877

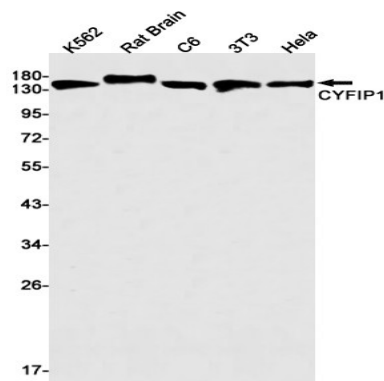


Component of the CYFIP1-EIF4E-FMR1 complex which binds to the mRNA cap and mediates translational repression. In the CYFIP1-EIF4E-FMR1 complex this subunit is an adapter between EIF4E and FMR1. Promotes the translation repression activity of FMR1 in brain probably by mediating its association with EIF4E and mRNA. Regulates formation of membrane ruffles and lamellipodia. Plays a role in axon outgrowth. Binds to F-actin but not to RNA. Part of the WAVE complex that regulates actin filament reorganization via its interaction with the Arp2/3 complex. Actin remodeling activity is regulated by RAC1. Regulator of epithelial morphogenesis. As component of the WAVE1 complex, required for BDNF-NTRK2 endocytic trafficking and signaling from early endosomes. May act as an invasion suppressor in cancers.

Research Area

-

Image Data



Western blot analysis of CYFIP1 in K562, rat Brain, C6, 3T3, HeLa lysates using CYFIP1 antibody.

Note

For research use only.