

**Product Name: Cyclophilin B Rabbit Monoclonal Antibody**  
**Catalog #: AMRe01875**

---

## Summary

<b>Production Name</b>	Cyclophilin B Rabbit Monoclonal Antibody
<b>Description</b>	Recombinant Rabbit Monoclonal antibody
<b>Host</b>	Rabbit
<b>Application</b>	WB
<b>Reactivity</b>	Human,Mouse,Rat

## Performance

<b>Conjugation</b>	Unconjugated
<b>Modification</b>	Unmodified
<b>Isotype</b>	IgG
<b>Clonality</b>	Monoclonal Antibody
<b>Form</b>	Liquid
<b>Storage</b>	Store at 4°C short term. Aliquot and store at -20°C long term. Avoid freeze/thaw cycles.
<b>Buffer</b>	50mM Tris-Glycine(pH 7.4), 0.15M NaCl, 40% Glycerol, 0.01% Sodium azide and 0.05% BSA
<b>Purification</b>	Affinity Purified

## Immunogen

<b>Gene Name</b>	PPIB
<b>Alternative Names</b>	PPIB; CYPB; Peptidyl-prolyl cis-trans isomerase B; PPlase B; CYP-S1; Cyclophilin B; Rotamase B; S-cyclophilin; SCYLP
<b>Gene ID</b>	5479
<b>SwissProt ID</b>	P23284

## Application

<b>Dilution Ratio</b>	WB: 1/500-1/1000
<b>Molecular Weight</b>	Calculated MW: 24 kDa; Observed MW: 20 kDa

**Product Name: Cyclophilin B Rabbit Monoclonal Antibody**  
**Catalog #: AMRe01875**

---

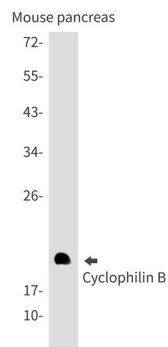
## Background

PPIases accelerate the folding of proteins. It catalyzes the cis-trans isomerization of proline imidic peptide bonds in oligopeptides.

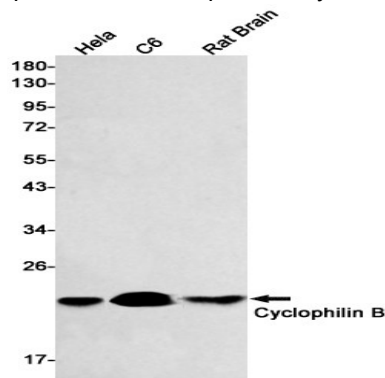
## Research Area

Immunology

## Image Data



Western blot analysis of Cyclophilin B in mouse pancreas lysates using Cyclophilin B antibody.



Western blot analysis of Cyclophilin B in HeLa, C6, rat Brain lysates using Cyclophilin B antibody.

## Note

For research use only.