
Summary

Production Name	Cyclin T1 Rabbit Monoclonal Antibody
Description	Recombinant Rabbit Monoclonal antibody
Host	Rabbit
Application	WB,IHC-F,IHC-P,ICC/IF,IP
Reactivity	Human,Mouse,Rat

Performance

Conjugation	Unconjugated
Modification	Unmodified
Isotype	IgG
Clonality	Monoclonal Antibody
Form	Liquid
Storage	Store at 4°C short term. Aliquot and store at -20°C long term. Avoid freeze/thaw cycles.
Buffer	50mM Tris-Glycine(pH 7.4), 0.15M NaCl, 40% Glycerol, 0.01% Sodium azide and 0.05% BSA
Purification	Affinity Purified

Immunogen

Gene Name	CCNT1
Alternative Names	CCNT; CYCT1; HIVE1
Gene ID	904
SwissProt ID	O60563

Application

Dilution Ratio	WB: 1/500-1/1000 IHC: 1/50-1/100 IF: 1/50-1/200 IP: 1/20
Molecular Weight	Calculated MW: 81 kDa; Observed MW: 81 kDa

Background

Product Name: Cyclin T1 Rabbit Monoclonal Antibody
Catalog #: AMRe01874

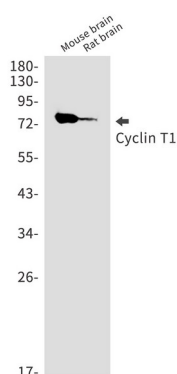


Regulatory subunit of the cyclin-dependent kinase pair (CDK9/cyclin-T1) complex, also called positive transcription elongation factor B (P-TEFb), which is proposed to facilitate the transition from abortive to productive elongation by phosphorylating the CTD (carboxy-terminal domain) of the large subunit of RNA polymerase II (RNA Pol II).

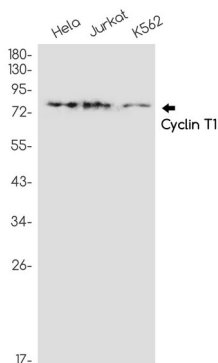
Research Area

Microbiology

Image Data



Western blot analysis of Cyclin T1 in mouse brain, rat brain lysates using Cyclin T1 antibody.



Western blot analysis of Cyclin T1 in HeLa, Jurkat, K562 lysates using Cyclin T1 antibody.

Note

For research use only.