
Summary

Production Name	Cyclin E2 Rabbit Monoclonal Antibody
Description	Recombinant Rabbit Monoclonal antibody
Host	Rabbit
Application	WB,IHC-F,IHC-P,ICC/IF
Reactivity	Human

Performance

Conjugation	Unconjugated
Modification	Unmodified
Isotype	IgG
Clonality	Monoclonal Antibody
Form	Liquid
Storage	Store at 4°C short term. Aliquot and store at -20°C long term. Avoid freeze/thaw cycles.
Buffer	50mM Tris-Glycine(pH 7.4), 0.15M NaCl, 40% Glycerol, 0.01% Sodium azide and 0.05% BSA
Purification	Affinity Purified

Immunogen

Gene Name	CCNE2
Alternative Names	CCNE2; G1/S-specific cyclin-E2
Gene ID	9134
SwissProt ID	O96020

Application

Dilution Ratio	WB: 1/500-1/1000 IHC: 1/50-1/100 IF: 1/50-1/200
Molecular Weight	Calculated MW: 47 kDa; Observed MW: 47 kDa

Background

Product Name: Cyclin E2 Rabbit Monoclonal Antibody
Catalog #: AMRe01872

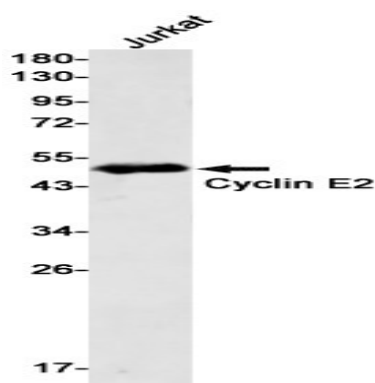


The human Cyclin E2 gene encodes a 404 amino acid protein that is most closely related to Cyclin E. Cyclin E2 mRNA levels peaks at the G1 / S transition. Cyclin E2 associates with Cdk2 in a functional kinase complex that is inhibited by both p27 (Kip1) and p21 (Cip1). Cyclin E2 / Cdk2 phosphorylates histone H1 in vitro. G1 cyclin E controls the initiation of DNA synthesis by activating CDK2. Abnormally high levels of cyclin E expression have frequently been observed in human cancers.

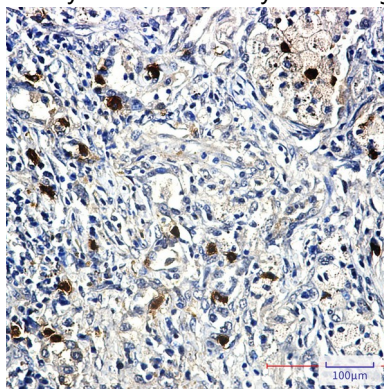
Research Area

Cell Biology

Image Data

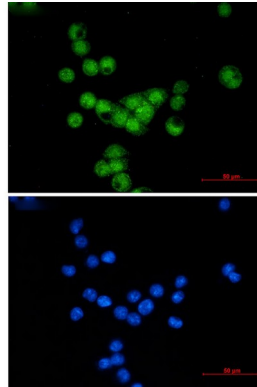


Western blot analysis of Cyclin E2 in Jurkat lysates using Cyclin E2 antibody.



Immunohistochemistry analysis of paraffin-embedded Human lung cancer using Cyclin E2 antibody. High-pressure and temperature Sodium Citrate pH 6.0 was used for antigen retrieval.

Product Name: Cyclin E2 Rabbit Monoclonal Antibody
Catalog #: AMRe01872



Immunocytochemistry analysis of Cyclin E2 (green) in MCF-7 using Cyclin E2 antibody, and DAPI (blue)

Note

For research use only.