

Product Name: CTP Synthase Rabbit Monoclonal Antibody
Catalog #: AMRe01860

Summary

Production Name	CTP Synthase Rabbit Monoclonal Antibody
Description	Recombinant Rabbit Monoclonal antibody
Host	Rabbit
Application	WB
Reactivity	Human

Performance

Conjugation	Unconjugated
Modification	Unmodified
Isotype	IgG
Clonality	Monoclonal Antibody
Form	Liquid
Storage	Store at 4°C short term. Aliquot and store at -20°C long term. Avoid freeze/thaw cycles.
Buffer	50mM Tris-Glycine(pH 7.4), 0.15M NaCl, 40% Glycerol, 0.01% Sodium azide and 0.05% BSA
Purification	Affinity Purified

Immunogen

Gene Name	CTPS1
Alternative Names	CTPS; GATD5; IMD24
Gene ID	1503
SwissProt ID	P17812

Application

Dilution Ratio	WB: 1/500-1/1000
Molecular Weight	Calculated MW: 67 kDa; Observed MW: 67 kDa

Product Name: CTP Synthase Rabbit Monoclonal Antibody
Catalog #: AMRe01860

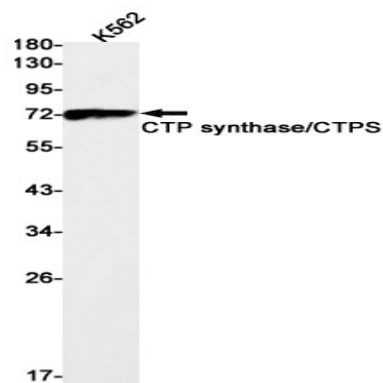
Background

This enzyme is involved in the de novo synthesis of CTP, a precursor of DNA, RNA and phospholipids. Catalyzes the ATP-dependent amination of UTP to CTP with either L-glutamine or ammonia as a source of nitrogen. This enzyme and its product, CTP, play a crucial role in the proliferation of activated lymphocytes and therefore in immunity.

Research Area

Tags & Cell Markers

Image Data



Western blot analysis of CTP synthase/CTPS in K562 lysates using CTP Synthase antibody.

Note

For research use only.