

## Summary

<b>Production Name</b>	Ctip2 Rabbit Monoclonal Antibody
<b>Description</b>	Recombinant Rabbit Monoclonal antibody
<b>Host</b>	Rabbit
<b>Application</b>	WB
<b>Reactivity</b>	Human

## Performance

<b>Conjugation</b>	Unconjugated
<b>Modification</b>	Unmodified
<b>Isotype</b>	IgG
<b>Clonality</b>	Monoclonal Antibody
<b>Form</b>	Liquid
<b>Storage</b>	Store at 4°C short term. Aliquot and store at -20°C long term. Avoid freeze/thaw cycles.
<b>Buffer</b>	50mM Tris-Glycine(pH 7.4), 0.15M NaCl, 40% Glycerol, 0.01% Sodium azide and 0.05% BSA
<b>Purification</b>	Affinity Purified

## Immunogen

<b>Gene Name</b>	BCL11B
<b>Alternative Names</b>	ATL1 alpha; ATL1 beta; ATL1 gamma; ATL1 delta; Bcl11b; BCL11B/TRDC fusion; CTIP2; hRIT1 alpha; hRit1; Rit1
<b>Gene ID</b>	64919
<b>SwissProt ID</b>	Q9C0K0

## Application

<b>Dilution Ratio</b>	WB: 1/500-1/1000
<b>Molecular Weight</b>	Calculated MW: 96 kDa; Observed MW: 120-130 kDa

**Product Name: Ctip2 Rabbit Monoclonal Antibody**  
**Catalog #: AMRe01859**



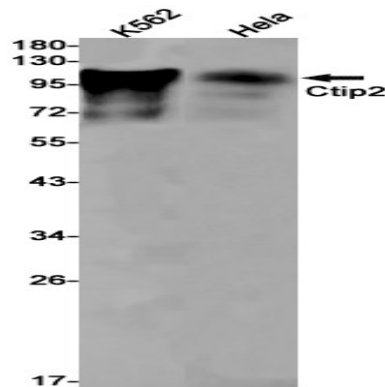
## Background

Tumor-suppressor protein involved in T-cell lymphomas. May function on the P53-signaling pathway. May be a key regulator of both differentiation and survival during thymocyte development. Repress transcription through direct, TFCOUP2-independent binding to a GC-rich response element.

## Research Area

Epigenetics and Nuclear Signaling

## Image Data



Western blot analysis of Ctip2 in K562, HeLa lysates using Ctip2 antibody.

## Note

For research use only.