

**Product Name: CRM1 Rabbit Monoclonal Antibody**  
**Catalog #: AMRe01853**



## Summary

<b>Production Name</b>	CRM1 Rabbit Monoclonal Antibody
<b>Description</b>	Recombinant Rabbit Monoclonal antibody
<b>Host</b>	Rabbit
<b>Application</b>	WB,ICC/IF
<b>Reactivity</b>	Human,Rat

## Performance

<b>Conjugation</b>	Unconjugated
<b>Modification</b>	Unmodified
<b>Isotype</b>	IgG
<b>Clonality</b>	Monoclonal Antibody
<b>Form</b>	Liquid
<b>Storage</b>	Store at 4°C short term. Aliquot and store at -20°C long term. Avoid freeze/thaw cycles.
<b>Buffer</b>	50mM Tris-Glycine(pH 7.4), 0.15M NaCl, 40% Glycerol, 0.01% Sodium azide and 0.05% BSA
<b>Purification</b>	Affinity Purified

## Immunogen

<b>Gene Name</b>	XPO1
<b>Alternative Names</b>	XPO1; CRM1; Exportin-1; Exp1; Chromosome region maintenance 1 protein homolog
<b>Gene ID</b>	7514
<b>SwissProt ID</b>	O14980

## Application

<b>Dilution Ratio</b>	WB: 1/500-1/1000 IF: 1/50-1/200
<b>Molecular Weight</b>	Calculated MW: 123 kDa; Observed MW: 123 kDa

## Background

**Product Name: CRM1 Rabbit Monoclonal Antibody**  
**Catalog #: AMRe01853**

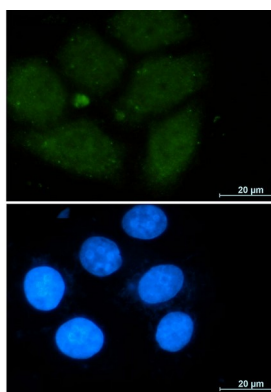


Mediates the nuclear export of cellular proteins (cargos) bearing a leucine-rich nuclear export signal (NES) and of RNAs. In the nucleus, in association with RANBP3, binds cooperatively to the NES on its target protein and to the GTPase RAN in its active GTP-bound form (Ran-GTP). Docking of this complex to the nuclear pore complex (NPC) is mediated through binding to nucleoporins.

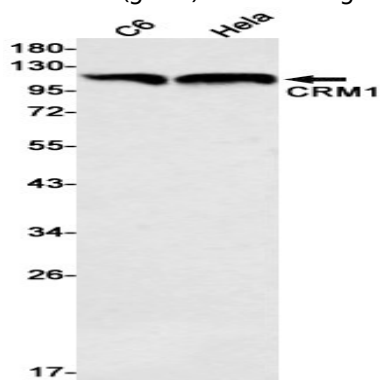
## Research Area

Signal Transduction

## Image Data



Immunocytochemistry analysis of CRM1 (green) in A549 using CRM1 antibody, and DAPI (blue).



Western blot analysis of CRM1 in C6, HeLa lysates using CRM1 antibody.

## Note

For research use only.