

Summary

Production Name	CREB Rabbit Monoclonal Antibody
Description	Recombinant Rabbit Monoclonal antibody
Host	Rabbit
Application	WB,IHC-P,IP
Reactivity	Human,Mouse,Rat

Performance

Conjugation	Unconjugated
Modification	Unmodified
Isotype	IgG
Clonality	Monoclonal Antibody
Form	Liquid
Storage	Store at 4°C short term. Aliquot and store at -20°C long term. Avoid freeze/thaw cycles.
Buffer	50mM Tris-Glycine(pH 7.4), 0.15M NaCl, 40% Glycerol, 0.01% Sodium azide and 0.05% BSA
Purification	Affinity Purified

Immunogen

Gene Name	CREB1
Alternative Names	CREB1; Cyclic AMP-responsive element-binding protein 1; CREB-1; cAMP-responsive element-binding protein 1
Gene ID	1385
SwissProt ID	P16220

Application

Dilution Ratio	WB: 1/500-1/1000 IHC: 1/50-1/100 IP: 1/20
Molecular Weight	Calculated MW: 35 kDa; Observed MW: 43 kDa

Product Name: CREB Rabbit Monoclonal Antibody
Catalog #: AMRe01851



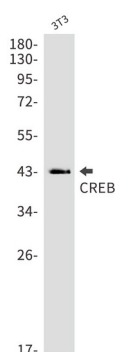
Background

This gene encodes a transcription factor that is a member of the leucine zipper family of DNA binding proteins. This protein binds as a homodimer to the cAMP-responsive element, an octameric palindrome.

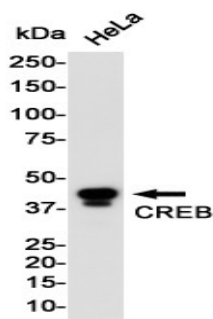
Research Area

Epigenetics and Nuclear Signaling

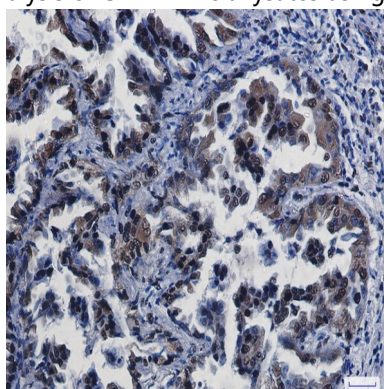
Image Data



Western blot analysis of CREB in 3T3 lysates using CREB antibody.



Western blot analysis of CREB in HeLa lysates using CREB antibody.



Immunohistochemistry analysis of paraffin-embedded Human lung cancer using CREB antibody. High-pressure and

Product Name: CREB Rabbit Monoclonal Antibody
Catalog #: AMRe01851



temperature Sodium Citrate pH 6.0 was used for antigen retrieval.

Note

For research use only.