

Summary

Production Name	Cpn10 Rabbit Monoclonal Antibody
Description	Recombinant Rabbit Monoclonal antibody
Host	Rabbit
Application	WB,IHC-P,IP
Reactivity	Human,Mouse,Rat

Performance

Conjugation	Unconjugated
Modification	Unmodified
Isotype	IgG
Clonality	Monoclonal Antibody
Form	Liquid
Storage	Store at 4°C short term. Aliquot and store at -20°C long term. Avoid freeze/thaw cycles.
Buffer	50mM Tris-Glycine(pH 7.4), 0.15M NaCl, 40% Glycerol, 0.01% Sodium azide and 0.05% BSA
Purification	Affinity Purified

Immunogen

Gene Name	HSPE1
Alternative Names	HSPE1; 10 kDa heat shock protein; mitochondrial; Hsp10; 10 kDa chaperonin; Chaperonin 10; CPN10; Early-pregnancy factor; EPF
Gene ID	3336
SwissProt ID	P61604

Application

Dilution Ratio	WB: 1/500-1/1000 IHC: 1/50-1/100 IP: 1/20
Molecular Weight	Calculated MW: 11 kDa; Observed MW: 11 kDa

Product Name: Cpn10 Rabbit Monoclonal Antibody
Catalog #: AMRe01848



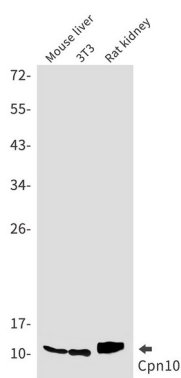
Background

Eukaryotic CPN10 homolog which is essential for mitochondrial protein biogenesis, together with CPN60. Binds to CPN60 in the presence of Mg-ATP and suppresses the ATPase activity of the latter.

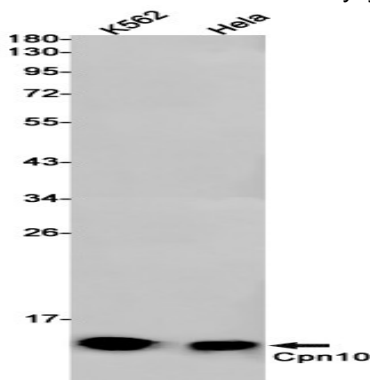
Research Area

Signal Transduction

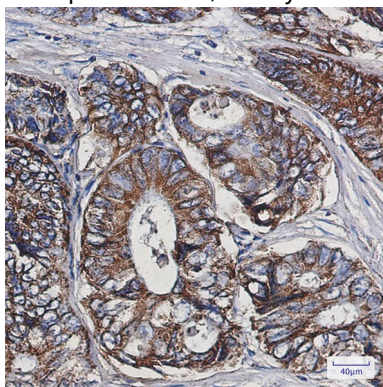
Image Data



Western blot analysis of Cpn10 in mouse liver, 3T3, rat kidney lysates using Cpn10 antibody.



Western blot analysis of Cpn10 in K562, HeLa lysates using Cpn10 antibody.



Immunohistochemistry analysis of paraffin-embedded Human colon cancer using Cpn10 antibody. High-pressure and

Product Name: Cpn10 Rabbit Monoclonal Antibody
Catalog #: AMRe01848



temperature Sodium Citrate pH 6.0 was used for antigen retrieval.

Note

For research use only.