

Summary

Production Name	CLIC4 Rabbit Monoclonal Antibody
Description	Recombinant Rabbit Monoclonal antibody
Host	Rabbit
Application	WB,IHC-F,IHC-P,ICC/IF,IP
Reactivity	Human,Mouse,Rat

Performance

Conjugation	Unconjugated
Modification	Unmodified
Isotype	IgG
Clonality	Monoclonal Antibody
Form	Liquid
Storage	Store at 4°C short term. Aliquot and store at -20°C long term. Avoid freeze/thaw cycles.
Buffer	50mM Tris-Glycine(pH 7.4), 0.15M NaCl, 40% Glycerol, 0.01% Sodium azide and 0.05% BSA
Purification	Affinity Purified

Immunogen

Gene Name	CLIC4
Alternative Names	CLIC4; Chloride intracellular channel protein 4; Intracellular chloride ion channel protein p64H1
Gene ID	25932
SwissProt ID	Q9Y696

Application

Dilution Ratio	WB: 1/500-1/1000 IHC: 1/50-1/100 IF: 1/50-1/200 IP: 1/20
Molecular Weight	Calculated MW: 29 kDa; Observed MW: 29 kDa

Product Name: CLIC4 Rabbit Monoclonal Antibody
Catalog #: AMRe01833



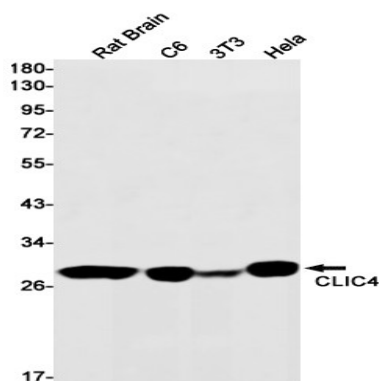
Background

Can insert into membranes and form poorly selective ion channels that may also transport chloride ions. Channel activity depends on the pH. Membrane insertion seems to be redox-regulated and may occur only under oxidizing conditions. Promotes cell-surface expression of HRH3. Has alternate cellular functions like a potential role in angiogenesis or in maintaining apical-basolateral membrane polarity during mitosis and cytokinesis. Could also promote endothelial cell proliferation and regulate endothelial morphogenesis (tubulogenesis).

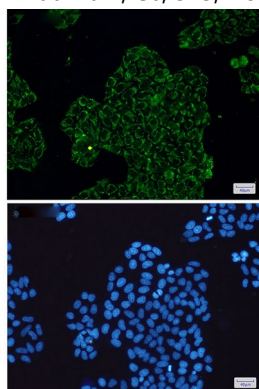
Research Area

Cell Biology

Image Data

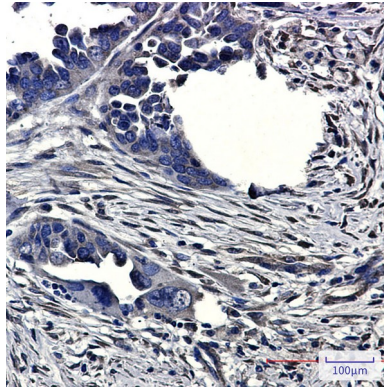


Western blot analysis of CLIC4 in rat Brain, C6, 3T3, HeLa lysates using CLIC4 antibody.



Immunocytochemistry analysis of CLIC4(green) in HeLa using CLIC4 antibody, and DAPI(blue)

Product Name: CLIC4 Rabbit Monoclonal Antibody
Catalog #: AMRe01833



Immunohistochemistry analysis of paraffin-embedded Human Cholangiocarcinoma using CLIC4 antibody. High-pressure and temperature Sodium Citrate pH 6.0 was used for antigen retrieval.

Note

For research use only.