

Product Name: Cleaved-PARP1 Rabbit Monoclonal Antibody
Catalog #: AMRe01832

Summary

Production Name	Cleaved-PARP1 Rabbit Monoclonal Antibody
Description	Recombinant Rabbit Monoclonal antibody
Host	Rabbit
Application	WB
Reactivity	Human

Performance

Conjugation	Unconjugated
Modification	Cleaved
Isotype	IgG
Clonality	Monoclonal Antibody
Form	Liquid
Storage	Store at 4°C short term. Aliquot and store at -20°C long term. Avoid freeze/thaw cycles.
Buffer	50mM Tris-Glycine(pH 7.4), 0.15M NaCl, 40% Glycerol, 0.01% Sodium azide and 0.05% BSA
Purification	Affinity Purified

Immunogen

Gene Name	PARP1 PARP1; ADPRT; PPOL; Poly [ADP-ribose] polymerase 1; PARP-1; ADP-ribosyltransferase
Alternative Names	diphtheria toxin-like 1; ARTD1; NAD(+) ADP-ribosyltransferase 1; ADPRT 1; Poly[ADP-ribose] synthase 1
Gene ID	142
SwissProt ID	P09874

Application

Dilution Ratio	WB: 1/500-1/1000
Molecular Weight	Calculated MW: 113 kDa; Observed MW: 89 kDa

Product Name: Cleaved-PARP1 Rabbit Monoclonal Antibody
Catalog #: AMRe01832



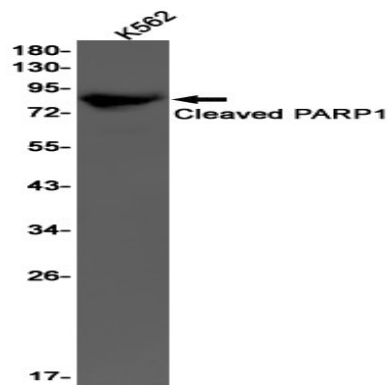
Background

Involved in the base excision repair (BER) pathway, by catalyzing the poly(ADP-ribosyl)ation of a limited number of acceptor proteins involved in chromatin architecture and in DNA metabolism. This modification follows DNA damages and appears as an obligatory step in a detection/signaling pathway leading to the reparation of DNA strand breaks.

Research Area

Epigenetics and Nuclear Signaling

Image Data



Western blot analysis of Cleaved- PARP1 in K562 lysates using Cleaved-PARP1 antibody.

Note

For research use only.