

Summary

Production Name	Claudin 3 Rabbit Monoclonal Antibody
Description	Recombinant Rabbit Monoclonal antibody
Host	Rabbit
Application	WB,ICC/IF,IP
Reactivity	Human

Performance

Conjugation	Unconjugated
Modification	Unmodified
Isotype	IgG
Clonality	Monoclonal Antibody
Form	Liquid
Storage	Store at 4°C short term. Aliquot and store at -20°C long term. Avoid freeze/thaw cycles.
Buffer	50mM Tris-Glycine(pH 7.4), 0.15M NaCl, 40% Glycerol, 0.01% Sodium azide and 0.05% BSA
Purification	Affinity Purified

Immunogen

Gene Name	CLDN3
Alternative Names	RVP1; HRVP1; C7orf1; CPE-R2; CPETR2
Gene ID	1365
SwissProt ID	O15551

Application

Dilution Ratio	WB: 1/500-1/1000 IF: 1/50-1/200 IP: 1/20
Molecular Weight	Calculated MW: 23 kDa; Observed MW: 20 kDa

Background

Product Name: Claudin 3 Rabbit Monoclonal Antibody
Catalog #: AMRe01831

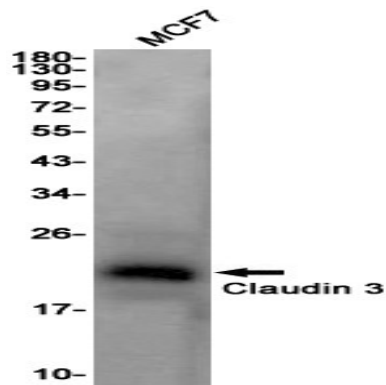


Plays a major role in tight junction-specific obliteration of the intercellular space, through calcium-independent cell-adhesion activity.

Research Area

Cell Biology

Image Data



Western blot analysis of Claudin 3 in MCF-7 lysates using Claudin 3 antibody.

Note

For research use only.