
Summary

Production Name	CIRBP Rabbit Monoclonal Antibody
Description	Recombinant Rabbit Monoclonal antibody
Host	Rabbit
Application	WB,IHC-P,IP
Reactivity	Human

Performance

Conjugation	Unconjugated
Modification	Unmodified
Isotype	IgG
Clonality	Monoclonal Antibody
Form	Liquid
Storage	Store at 4°C short term. Aliquot and store at -20°C long term. Avoid freeze/thaw cycles.
Buffer	50mM Tris-Glycine(pH 7.4), 0.15M NaCl, 40% Glycerol, 0.01% Sodium azide and 0.05% BSA
Purification	Affinity Purified

Immunogen

Gene Name	CIRBP
Alternative Names	CIRP
Gene ID	1153
SwissProt ID	Q14011

Application

Dilution Ratio	WB: 1/500-1/1000 IHC: 1/50-1/100 IP: 1/20
Molecular Weight	Calculated MW: 19 kDa; Observed MW: 19 kDa

Background

Product Name: CIRBP Rabbit Monoclonal Antibody
Catalog #: AMRe01829

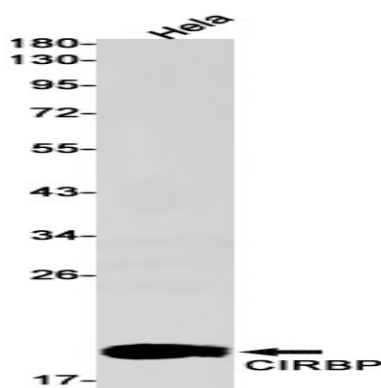


Cold-inducible mRNA binding protein that plays a protective role in the genotoxic stress response by stabilizing transcripts of genes involved in cell survival. Acts as a translational activator. Seems to play an essential role in cold-induced suppression of cell proliferation. Binds specifically to the 3'-untranslated regions (3'-UTRs) of stress-responsive transcripts RPA2 and TXN. Acts as a translational repressor. Promotes assembly of stress granules (SGs), when overexpressed.

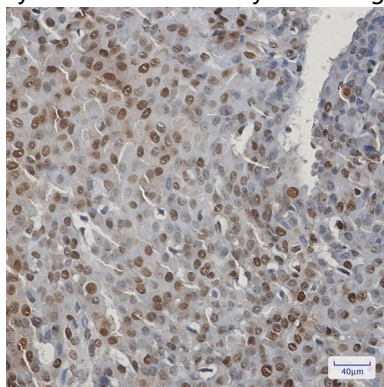
Research Area

Epigenetics and Nuclear Signaling

Image Data



Western blot analysis of CIRBP in HeLa lysates using CIRBP antibody.



Immunohistochemistry analysis of paraffin-embedded Human breast cancer using CIRBP antibody. High-pressure and temperature Sodium Citrate pH 6.0 was used for antigen retrieval.

Note

For research use only.