

Summary

Production Name	Chk1 Rabbit Monoclonal Antibody
Description	Recombinant Rabbit Monoclonal antibody
Host	Rabbit
Application	WB
Reactivity	Human,Mouse,Rat

Performance

Conjugation	Unconjugated
Modification	Unmodified
Isotype	IgG
Clonality	Monoclonal Antibody
Form	Liquid
Storage	Store at 4°C short term. Aliquot and store at -20°C long term. Avoid freeze/thaw cycles.
Buffer	50mM Tris-Glycine(pH 7.4), 0.15M NaCl, 40% Glycerol, 0.01% Sodium azide and 0.05% BSA
Purification	Affinity Purified

Immunogen

Gene Name	CHEK1
Alternative Names	CHEK1; CHK1; Serine/threonine-protein kinase Chk1; CHK1 checkpoint homolog; Cell cycle checkpoint kinase; Checkpoint kinase-1
Gene ID	1111
SwissProt ID	O14757

Application

Dilution Ratio	WB: 1/500-1/1000
Molecular Weight	Calculated MW: 54 kDa; Observed MW: 54 kDa

Product Name: Chk1 Rabbit Monoclonal Antibody
Catalog #: AMRe01821



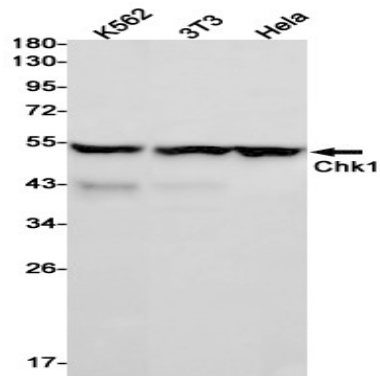
Background

DNA damage induced protein phosphorylation; regulation of mitotic centrosome separation; regulation of S phase; peptidyl-threonine phosphorylation; DNA repair; chromatin-mediated maintenance of transcription; negative regulation of mitosis;

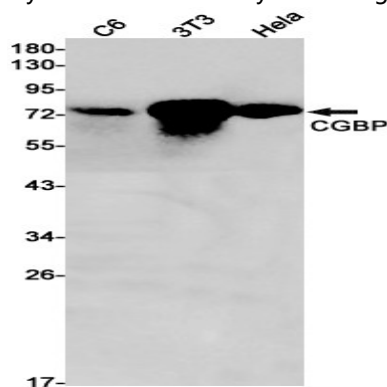
Research Area

Epigenetics and Nuclear Signaling

Image Data



Western blot analysis of Chk1 in K562 lysates using Chk1 antibody.



Western blot analysis of Chk1 in K562, 3T3, HeLa lysates using Chk1 antibody.

Note

For research use only.