
Summary

Production Name	CENPE Rabbit Monoclonal Antibody
Description	Recombinant Rabbit Monoclonal antibody
Host	Rabbit
Application	WB
Reactivity	Human

Performance

Conjugation	Unconjugated
Modification	Unmodified
Isotype	IgG
Clonality	Monoclonal Antibody
Form	Liquid
Storage	Store at 4°C short term. Aliquot and store at -20°C long term. Avoid freeze/thaw cycles.
Buffer	50mM Tris-Glycine(pH 7.4), 0.15M NaCl, 40% Glycerol, 0.01% Sodium azide and 0.05% BSA
Purification	Affinity Purified

Immunogen

Gene Name	CENPE
Alternative Names	CENP E; Centromere associated protein E; Centromere protein E 312kDa; KIF10; Kinesin family member 10; Kinesin related protein; PPP1R61
Gene ID	1062
SwissProt ID	Q02224

Application

Dilution Ratio	WB: 1/500-1/1000
Molecular Weight	Calculated MW: 316 kDa; Observed MW: 316 kDa

Product Name: CENPE Rabbit Monoclonal Antibody
Catalog #: AMRe01818



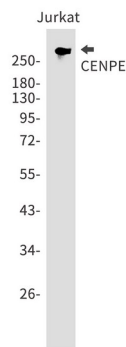
Background

CENPE is a 250-300 kDa human centromere-associated kinesin-like motor protein that accumulates in G2 phase.

Research Area

Epigenetics and Nuclear Signaling

Image Data



Western blot analysis of CENPE in Jurkat lysates using CENPE antibody.

Note

For research use only.