

**Product Name: Cellular Apoptosis Susceptibility Rabbit  
Monoclonal Antibody  
Catalog #: AMRe01817**

---



## Summary

<b>Production Name</b>	Cellular Apoptosis Susceptibility Rabbit Monoclonal Antibody
<b>Description</b>	Recombinant Rabbit Monoclonal antibody
<b>Host</b>	Rabbit
<b>Application</b>	WB,IHC-F,IHC-P,ICC/IF
<b>Reactivity</b>	Human,Mouse

## Performance

<b>Conjugation</b>	Unconjugated
<b>Modification</b>	Unmodified
<b>Isotype</b>	IgG
<b>Clonality</b>	Monoclonal Antibody
<b>Form</b>	Liquid
<b>Storage</b>	Store at 4°C short term. Aliquot and store at -20°C long term. Avoid freeze/thaw cycles.
<b>Buffer</b>	50mM Tris-Glycine(pH 7.4), 0.15M NaCl, 40% Glycerol, 0.01% Sodium azide and 0.05% BSA
<b>Purification</b>	Affinity Purified

## Immunogen

<b>Gene Name</b>	CSE1L
<b>Alternative Names</b>	CSE1L; CAS; CSE1; Exp2; Importin-alpha re-exporter; Exportin-2; XPO2
<b>Gene ID</b>	1434
<b>SwissProt ID</b>	P55060

## Application

<b>Dilution Ratio</b>	WB: 1/500-1/1000 IHC: 1/50-1/100 IF: 1/50-1/200
<b>Molecular Weight</b>	Calculated MW: 110 kDa; Observed MW: 110 kDa

**Product Name: Cellular Apoptosis Susceptibility Rabbit  
Monoclonal Antibody  
Catalog #: AMRe01817**



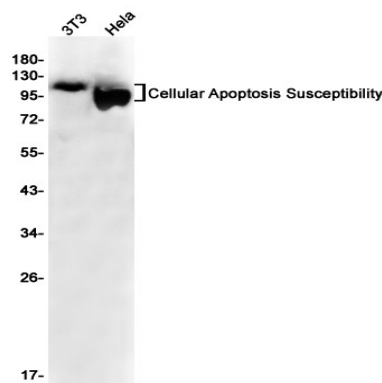
## Background

Export receptor for importin-alpha. Mediates importin-alpha re-export from the nucleus to the cytoplasm after import substrates (cargos) have been released into the nucleoplasm. In the nucleus binds cooperatively to importin-alpha and to the GTPase Ran in its active GTP-bound form.

## Research Area

Cell Biology

## Image Data



Western blot analysis of ular Apoptosis Susceptibility in 3T3, HeLa lysates using ular Apoptosis Susceptibility antibody.

## Note

For research use only.