

## Summary

<b>Production Name</b>	CDK9 Rabbit Monoclonal Antibody
<b>Description</b>	Recombinant Rabbit Monoclonal antibody
<b>Host</b>	Rabbit
<b>Application</b>	WB,IHC-F,IHC-P,ICC/IF,IP
<b>Reactivity</b>	Human,Mouse,Rat

## Performance

<b>Conjugation</b>	Unconjugated
<b>Modification</b>	Unmodified
<b>Isotype</b>	IgG
<b>Clonality</b>	Monoclonal Antibody
<b>Form</b>	Liquid
<b>Storage</b>	Store at 4°C short term. Aliquot and store at -20°C long term. Avoid freeze/thaw cycles.
<b>Buffer</b>	50mM Tris-Glycine(pH 7.4), 0.15M NaCl, 40% Glycerol, 0.01% Sodium azide and 0.05% BSA
<b>Purification</b>	Affinity Purified

## Immunogen

<b>Gene Name</b>	CDK9
<b>Alternative Names</b>	TAK; C-2k; CTK1; CDC2L4; PITALRE
<b>Gene ID</b>	1025
<b>SwissProt ID</b>	P50750

## Application

<b>Dilution Ratio</b>	WB: 1/500-1/1000 IHC: 1/50-1/100 IF: 1/50-1/200 IP: 1/20
<b>Molecular Weight</b>	Calculated MW: 43 kDa; Observed MW: 43 kDa

## Background

**Product Name: CDK9 Rabbit Monoclonal Antibody**  
**Catalog #: AMRe01810**

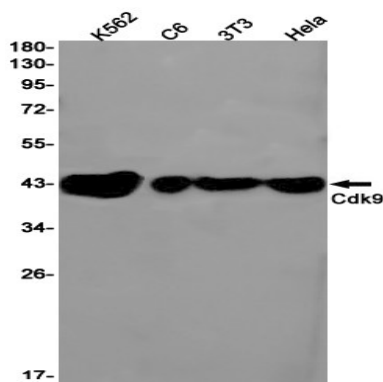


Cyclin dependent kinases (CDKs) are activated in part by cyclin binding and by phosphorylation of a conserved threonine in the T-loop domain. Member of the cyclin-dependent kinase pair (CDK9/cyclin-T) complex, also called positive transcription elongation factor b (P-TEFb), which facilitates the transition from abortive to production elongation by phosphorylating the CTD (C-terminal domain) of the large subunit of RNA polymerase II (RNAP II), SUPT5H and RDBP.

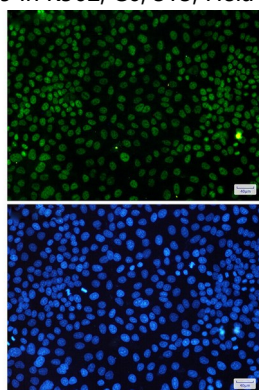
## Research Area

Cell Biology

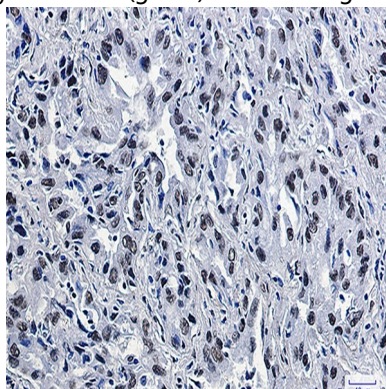
## Image Data



Western blot analysis of Cdk9 in K562, C6, 3T3, HeLa lysates using CDK9 antibody.



Immunocytochemistry analysis of Cdk9(green) in HeLa using Cdk9 antibody, and DAPI(blue)



**Product Name: CDK9 Rabbit Monoclonal Antibody**  
**Catalog #: AMRe01810**



---

Immunohistochemistry analysis of paraffin-embedded Human lung cancer using Cdk9 antibody. High-pressure and temperature Sodium Citrate pH 6.0 was used for antigen retrieval.

**Note**

For research use only.