

**Product Name: CD3 epsilon Rabbit Monoclonal Antibody**  
**Catalog #: AMRe01786**

---

## Summary

<b>Production Name</b>	CD3 epsilon Rabbit Monoclonal Antibody
<b>Description</b>	Recombinant Rabbit Monoclonal antibody
<b>Host</b>	Rabbit
<b>Application</b>	WB,IHC-P,IP
<b>Reactivity</b>	Human

## Performance

<b>Conjugation</b>	Unconjugated
<b>Modification</b>	Unmodified
<b>Isotype</b>	IgG
<b>Clonality</b>	Monoclonal Antibody
<b>Form</b>	Liquid
<b>Storage</b>	Store at 4°C short term. Aliquot and store at -20°C long term. Avoid freeze/thaw cycles.
<b>Buffer</b>	50mM Tris-Glycine(pH 7.4), 0.15M NaCl, 40% Glycerol, 0.01% Sodium azide and 0.05% BSA
<b>Purification</b>	Affinity Purified

## Immunogen

<b>Gene Name</b>	CD3E
<b>Alternative Names</b>	CD3E; T3E; T-cell surface glycoprotein CD3 epsilon chain; T-cell surface antigen T3/Leu-4 epsilon chain; CD3e
<b>Gene ID</b>	916
<b>SwissProt ID</b>	P07766

## Application

<b>Dilution Ratio</b>	WB: 1/500-1/1000 IHC: 1/50-1/100 IP: 1/20
<b>Molecular Weight</b>	Calculated MW: 23 kDa; Observed MW: 23 kDa

**Product Name: CD3 epsilon Rabbit Monoclonal Antibody**  
**Catalog #: AMRe01786**

---

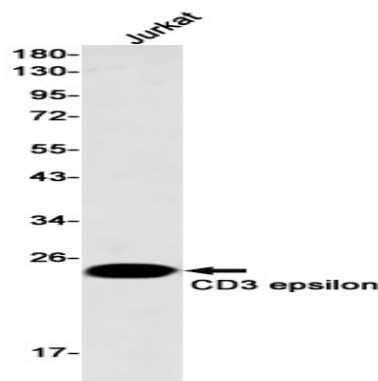
## Background

The CD3 complex mediates signal transduction. When T cells encounter antigens via the T cell receptor (TCR), information about the quantity and quality of antigens is relayed to the intracellular signal transduction machinery. This activation process depends mainly on CD3 (Cluster of Differentiation 3), a multiunit protein complex that directly associates with the TCR. CD3 is composed of four polypeptides:  $\zeta$ ,  $\gamma$ ,  $\epsilon$  and  $\delta$ .

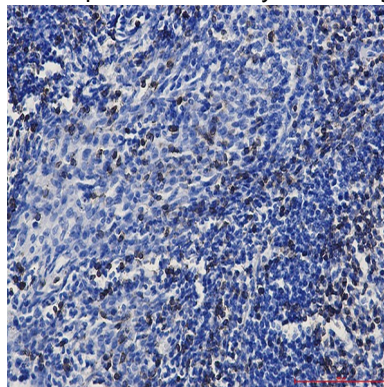
## Research Area

Immunology

## Image Data



Western blot analysis of CD3 epsilon in Jurkat lysates using CD3 epsilon antibody.



Immunohistochemistry analysis of paraffin-embedded Human tonsil using CD3 epsilon antibody. High-pressure and temperature Sodium Citrate pH 6.0 was used for antigen retrieval.

## Note

For research use only.