

---

## Summary

<b>Production Name</b>	CD226 Rabbit Monoclonal Antibody
<b>Description</b>	Recombinant Rabbit Monoclonal antibody
<b>Host</b>	Rabbit
<b>Application</b>	WB
<b>Reactivity</b>	Human

## Performance

<b>Conjugation</b>	Unconjugated
<b>Modification</b>	Unmodified
<b>Isotype</b>	IgG
<b>Clonality</b>	Monoclonal Antibody
<b>Form</b>	Liquid
<b>Storage</b>	Store at 4°C short term. Aliquot and store at -20°C long term. Avoid freeze/thaw cycles.
<b>Buffer</b>	50mM Tris-Glycine(pH 7.4), 0.15M NaCl, 40% Glycerol, 0.01% Sodium azide and 0.05% BSA
<b>Purification</b>	Affinity Purified

## Immunogen

<b>Gene Name</b>	CD226
<b>Alternative Names</b>	CD226; DNAM1; CD226 antigen; DNAX accessory molecule 1; DNAM-1; CD antigen
<b>Gene ID</b>	10666
<b>SwissProt ID</b>	Q15762

## Application

<b>Dilution Ratio</b>	WB: 1/500-1/1000
<b>Molecular Weight</b>	Calculated MW: 39 kDa; Observed MW: 60-80 kDa

**Product Name: CD226 Rabbit Monoclonal Antibody**  
**Catalog #: AMRe01781**



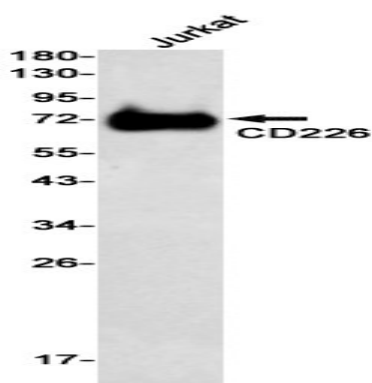
## Background

This gene encodes a glycoprotein expressed on the surface of NK cells, platelets, monocytes and a subset of T cells. It is a member of the Ig-superfamily containing 2 Ig-like domains of the V-set. The protein mediates cellular adhesion of platelets and megakaryocytic cells to vascular endothelial cells. The protein also plays a role in megakaryocytic cell maturation. Alternative splicing results in multiple transcript variants.

## Research Area

Immunology

## Image Data



Western blot analysis of CD226 in Jurkat lysates using CD226 antibody.

## Note

For research use only.