

**Product Name: Phospho-CD18 (Ser745) Rabbit
Monoclonal Antibody
Catalog #: AMRe01779**

Summary

Production Name	Phospho-CD18 (Ser745) Rabbit Monoclonal Antibody
Description	Recombinant Rabbit Monoclonal antibody
Host	Rabbit
Application	WB,IP
Reactivity	Human,Mouse,Rat

Performance

Conjugation	Unconjugated
Modification	Phosphorylated
Isotype	IgG
Clonality	Monoclonal Antibody
Form	Liquid
Storage	Store at 4°C short term. Aliquot and store at -20°C long term. Avoid freeze/thaw cycles.
Buffer	50mM Tris-Glycine(pH 7.4), 0.15M NaCl, 40% Glycerol, 0.01% Sodium azide and 0.05% BSA
Purification	Affinity Purified

Immunogen

Gene Name	ITGB2 ITGB2; CD18; MF17; Integrin beta-2; Cell surface adhesion glycoproteins
Alternative Names	LFA-1/CR3/p150; 95 subunit beta; Complement receptor C3 subunit beta; CD antigen CD18
Gene ID	3689
SwissProt ID	P05107

Application

Dilution Ratio	WB: 1/500-1/1000 IP: 1/20
Molecular Weight	Calculated MW: 85 kDa; Observed MW: 85 kDa

Product Name: Phospho-CD18 (Ser745) Rabbit Monoclonal Antibody
Catalog #: AMRe01779

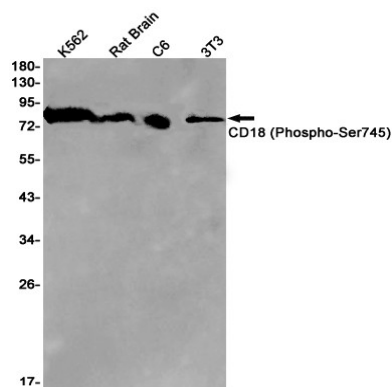
Background

Integrin alpha-X/beta-2 recognizes the sequence G-P-R in fibrinogen alpha-chain. Integrin alpha-M/beta-2 recognizes P1 and P2 peptides of fibrinogen gamma chain. Integrin alpha-M/beta-2 is also a receptor for factor X. Integrin alpha-D/beta-2 is a receptor for ICAM3 and VCAM1.

Research Area

Tags & Cell Markers

Image Data



Western blot analysis of CD18 (Phospho-Ser745) in K562, rat Brain, C6, 3T3 lysates using Phospho-CD18 (Ser745) antibody.

Note

For research use only.