

**Product Name: Integrin alpha L Rabbit Monoclonal Antibody**  
**Catalog #: AMRe01774**

---

## Summary

<b>Production Name</b>	Integrin alpha L Rabbit Monoclonal Antibody
<b>Description</b>	Recombinant Rabbit Monoclonal antibody
<b>Host</b>	Rabbit
<b>Application</b>	WB,IHC-F,IHC-P,ICC/IF,IP
<b>Reactivity</b>	Human

## Performance

<b>Conjugation</b>	Unconjugated
<b>Modification</b>	Unmodified
<b>Isotype</b>	IgG
<b>Clonality</b>	Monoclonal Antibody
<b>Form</b>	Liquid
<b>Storage</b>	Store at 4°C short term. Aliquot and store at -20°C long term. Avoid freeze/thaw cycles.
<b>Buffer</b>	50mM Tris-Glycine(pH 7.4), 0.15M NaCl, 40% Glycerol, 0.01% Sodium azide and 0.05% BSA
<b>Purification</b>	Affinity Purified

## Immunogen

<b>Gene Name</b>	ITGAL
<b>Alternative Names</b>	ITGAL; CD11A; Integrin alpha-L; CD11 antigen-like family member A; Leukocyte adhesion glycoprotein LFA-1 alpha chain; LFA-1A; Leukocyte function-associated molecule 1 alpha chain; CD11a
<b>Gene ID</b>	3683
<b>SwissProt ID</b>	P20701

## Application

<b>Dilution Ratio</b>	WB: 1/500-1/1000 IHC: 1/50-1/100 IF: 1/50-1/200 IP: 1/20
<b>Molecular Weight</b>	Calculated MW: 129 kDa; Observed MW: 150 kDa

---

**Product Name: Integrin alpha L Rabbit Monoclonal Antibody**  
**Catalog #: AMRe01774**

---

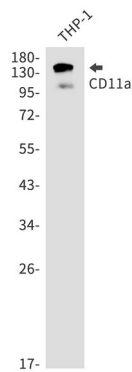
## Background

Integrin alpha-L/beta-2 is a receptor for ICAM1, ICAM2, ICAM3 and ICAM4. It is involved in a variety of immune phenomena including leukocyte-endothelial cell interaction, cytotoxic T-cell mediated killing, and antibody dependent killing by granulocytes and monocytes.

## Research Area

Tags & Cell Markers

## Image Data



Western blot analysis of CD11a in THP-1 lysates using Integrin alpha L antibody.

## Note

For research use only.