

**Product Name: Caveolin 1 Rabbit Monoclonal Antibody**  
**Catalog #: AMRe01768**



## Summary

|                        |  |
|------------------------|--|
| <b>Production Name</b> | Caveolin 1 Rabbit Monoclonal Antibody  |
| <b>Description</b>     | Recombinant Rabbit Monoclonal antibody |
| <b>Host</b>            | Rabbit                                 |
| <b>Application</b>     | WB,IHC-P                               |
| <b>Reactivity</b>      | Human                                  |

## Performance

|                     |  |
|---------------------|--|
| <b>Conjugation</b>  | Unconjugated   |
| <b>Modification</b> | Unmodified   |
| <b>Isotype</b>      | IgG  |
| <b>Clonality</b>    | Monoclonal Antibody  |
| <b>Form</b>         | Liquid   |
| <b>Storage</b>      | Store at 4°C short term. Aliquot and store at -20°C long term. Avoid freeze/thaw cycles. |
| <b>Buffer</b>       | 50mM Tris-Glycine(pH 7.4), 0.15M NaCl, 40% Glycerol, 0.01% Sodium azide and 0.05% BSA    |
| <b>Purification</b> | Affinity Purified  |

## Immunogen

|                          |                       |
|--------------------------|-----------------------|
| <b>Gene Name</b>         | CAV1                  |
| <b>Alternative Names</b> | CAV1; CAV; Caveolin-1 |
| <b>Gene ID</b>           | 857                   |
| <b>SwissProt ID</b>      | Q03135                |

## Application

|                         |  |
|-------------------------|--|
| <b>Dilution Ratio</b>   | WB: 1/500-1/1000 IHC: 1/50-1/100           |
| <b>Molecular Weight</b> | Calculated MW: 20 kDa; Observed MW: 20 kDa |

## Background

**Product Name: Caveolin 1 Rabbit Monoclonal Antibody**  
**Catalog #: AMRe01768**

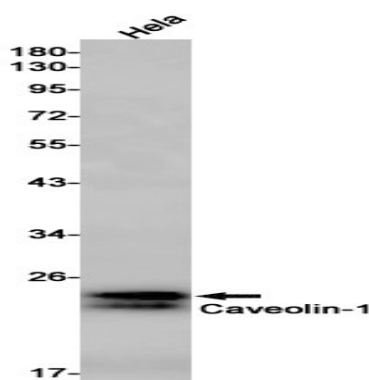


Caveolin-1 may act as a scaffolding protein within caveolar membranes. Interacts directly with G-protein alpha subunits and can functionally regulate their activity (By similarity). Involved in the costimulatory signal essential for T-cell receptor (TCR)-mediated T-cell activation. Its binding to DPP4 induces T-cell proliferation and NF-kappa-B activation in a T-cell receptor/CD3-dependent manner. Recruits CTNNB1 to caveolar membranes and may regulate CTNNB1-mediated signaling through the Wnt pathway.

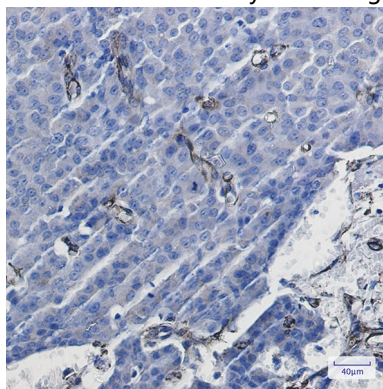
## Research Area

Cardiovascular

## Image Data



Western blot analysis of Caveolin1 in HeLa lysates using Caveolin 1 antibody.



Immunohistochemistry analysis of paraffin-embedded Human breast cancer using Caveolin1 antibody. High-pressure and temperature Sodium Citrate pH 6.0 was used for antigen retrieval.

## Note

For research use only.